

# RENEWABLE ENERGY SOLUTIONS



Renewable energy with Meka® products - *sustainably and safely*





## Environment and Meka Pro

The environment is one of Meka Pro's core values. The company's environmental management is based on identifying the environmental impact of its operations, products and services.

MEKA® products are carefully designed and manufactured to high quality standards for a long life. We ensure that our knowledge of environmental issues is constantly up-to-date and we keep abreast of developments in legislation and regulations.

## Our carbon footprint

We continuously strive to improve our environmental performance. One example of this is that the carbon footprint of all Meka Pro Oy products has been calculated. Packaging is made from recyclable materials and we ensure that the packaging of the products we supply to the market is recycled, as we are a member of the Finnish Packaging Recycling RINKI Ltd.

Meka Pro Oy's quality and environmental systems are linked to the operating system, which constitutes all our main activities. Our environmental management system complies with the ISO 14001 standard.

*Our goal for the near future is to be carbon neutral.*



## Renewable energy, sustainable choices

By choosing renewable energy options, you are making a significant and positive impact on the environment and a sustainable future. It also supports technological development and innovation. Renewable energy sources, such as solar power, exploit nature's own resources without significant emissions or environmental damage. This reduces dependence on conventional fuels and promotes a shift towards more sustainable energy sources.

Renewable energy sources offer local solutions and reduce dependence on centralised energy production, making energy operations more reliable and sustainable.

*Renewable energy production  
is a sustainable choice.*



# Surface Treatment Options

The choice of surface treatment for the products should be made based on the conditions on the site. MEKA® product names include a code to indicate their surface treatment, e.g. KS20-200 L=6000 **PG**.

## PLASTIC

White or colored plastic

**Atmospheric-Corrosivity Category**  
C1-C2  
**Standard**  
-

Plastic products are made of through-dyed plastic granules, by either injection moulding or extrusion.

Plastic products are not surface treated after manufacture.

## EG

Steel, galvanised after manufacture

**Atmospheric-Corrosivity Category**  
C1-C2  
**Standard**  
EN ISO 2081  
Zinc layer strength on average 5-8 µm

Electro-galvanised products are made of non-surface-treated steel. The final product, such as a whole wire mesh tray or an attaching part thereof is pre-treated and galvanised in an electrolytic basin. The zinc layer covers all surfaces of the product, including cutting surfaces and welding seams.

## PG

Pre-galvanised steel

**Atmospheric-Corrosivity Category**  
C1-C2  
**Standard**  
EN 10346  
Zinc layer strength on average 20 µm

Pre-galvanised steel products are made of steel that is already galvanised. These products may also be called pre-galvanised, continuously galvanised or Sendzimir-galvanised.

## HDG

Steel that has been dipped in molten zinc after manufacture (dip-galvanised)

**Atmospheric-Corrosivity Category**  
C1-C4  
**Standard**  
EN ISO 1461  
Zinc layer strength on average 45-55 µm

Hot-dip galvanised products are made of non-surface treated steel. The final product, such as a whole cable tray or an attaching part thereof is pre-treated and dipped in molten zinc. These products may also be called dip-galvanised. The zinc layer covers all surfaces of the product, including cutting surfaces and welding seams.

## XPG

Hot-dip galvanized, specially coated steel

**Atmospheric-Corrosivity Category**  
C1-C4  
**Standard**  
EN 10346  
XPG® layer strength on average 23-24 µm

XPG® products are made of zinc-based special alloy coated steel. The special mixture forms a thin and tight film on the coating, which improves corrosion protection. Corrosion protection is based on cathodic and mechanical protection.

## HST

Acid-proof stainless steel AISI 316L

**Atmospheric-Corrosivity Category**  
C1-CX  
**Standard**  
EN 10088

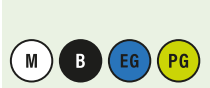
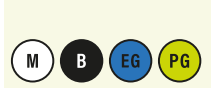




Acid-proof stainless steel products (HST) are made of acid-proof steel. Welded products are pickled after manufacture.





# Corrosion Classification

EN ISO 12944

<b>C1</b> Very low	<b>C2</b> Low	<b>C3</b> Medium	<b>C4</b> High	<b>C5</b> Very high	<b>CX</b> Extreme
<b>OUTDOORS</b> Not for outdoor use.	<b>OUTDOORS</b> Atmospheres with a low level of pollution: mostly rural areas.	<b>OUTDOORS</b> Urban and industrial atmospheres, moderate sulfur dioxide pollution; coastal areas with low salinity.	<b>OUTDOORS</b> Industrial areas and coastal areas with moderate salinity.	<b>OUTDOORS</b> Industrial areas with high humidity and aggressive atmosphere, and coastal areas with high salinity.	<b>OUTDOORS</b> Offshore areas with high salinity, industrial areas with extreme humidity, and aggressive atmospheres, sub-tropical or tropical atmospheres.
<b>INDOORS</b> Heated buildings with a clean atmosphere, e.g. offices, schools and hotels.	<b>INDOORS</b> Unheated buildings with a possibility for condensation, e.g. warehouses and sports halls.	<b>INDOORS</b> Production areas with high humidity and some atmospheric impurities, e.g. food product manufacturing plants.	<b>INDOORS</b> Chemical plants, swimming pools, coastal ship and boatyards.	<b>INDOORS</b> Buildings with almost permanent condensation and with high pollution.	<b>INDOORS</b> Industrial buildings with extreme humidity and aggressive atmosphere.
<b>ZINC THICKNESS LOSS</b> ≤ 0,1 µm / year	<b>ZINC THICKNESS LOSS</b> > 0,1-0,7 µm / year	<b>ZINC THICKNESS LOSS</b> > 0,7-2,1 µm / year	<b>ZINC THICKNESS LOSS</b> > 2,1-4,2 µm / year	<b>ZINC THICKNESS LOSS</b> > 4,2-8,4 µm / year	<b>ZINC THICKNESS LOSS</b> > 8,4-25 µm / year
<b>RECOMMENDED SURFACE TREATMENT</b> M, B, EG, PG	<b>RECOMMENDED SURFACE TREATMENT</b> M, B, EG, PG	<b>RECOMMENDED SURFACE TREATMENT</b> HDG, XPG	<b>RECOMMENDED SURFACE TREATMENT</b> HDG, XPG	<b>RECOMMENDED SURFACE TREATMENT</b> HST	<b>RECOMMENDED SURFACE TREATMENT</b> HST
					



# NORTHERN POWER IN SOLAR PANELS – MEKA SOLAR NORDIC PV SYSTEM

Nordic PV System is a ground mounting system for solar panels manufactured in Finland and designed to withstand the variable weather conditions of the North. Installation methods involve direct ground piling or installation with Solar Foot on a concrete foundation or screw pile.

## Meka Solar - designed to last

With Meka's ground mounting system for solar panels, you can ensure solar energy production year after year. Nordic PV System is a ground mounted solar panel system manufactured in Finland that is made to withstand the varying weather conditions of the north. The wind and snow load resistance of the system has been simulated according to Eurocode standards.

## Easy and quick installation even in demanding conditions

Nordic PV System is suitable up to corrosion class C4 and is fully recyclable. The system consists of an optimised of the number of parts. All the necessary components are included with ground mounting system, from the assembly of the system to the mounting of the solar panels.\* The main component of the system is the perforated C-Profile, which allows installation in the most challenging conditions and makes installation quick and easy. Span up to 2.8 m.

\*For concrete foundations or screw piles screws not included

## Why use solar energy?

Solar panel system installation in a detached house can reduce energy costs significantly. Producing solar energy in your own home is environmentally friendly way to reduce your carbon footprint. For larger companies, solar energy offers a competitive alternative to traditional energy sources. Investing in solar energy can generate significant savings in the long term.

*Fast and precise  
delivery*

**MEKA<sup>®</sup>**  
**SOLAR**  
GROUND MOUNTING SYSTEM





# NORDIC PV SYSTEM - For large and small solar panels

Two systems to suit panels of all sizes

## NORDIC PV SYSTEM GL3

### For large solar panels

Installation angle 30°  
(Maximum panel size  
2384 x 1303 mm)

## NORDIC PV SYSTEM GS3

### For small solar panel

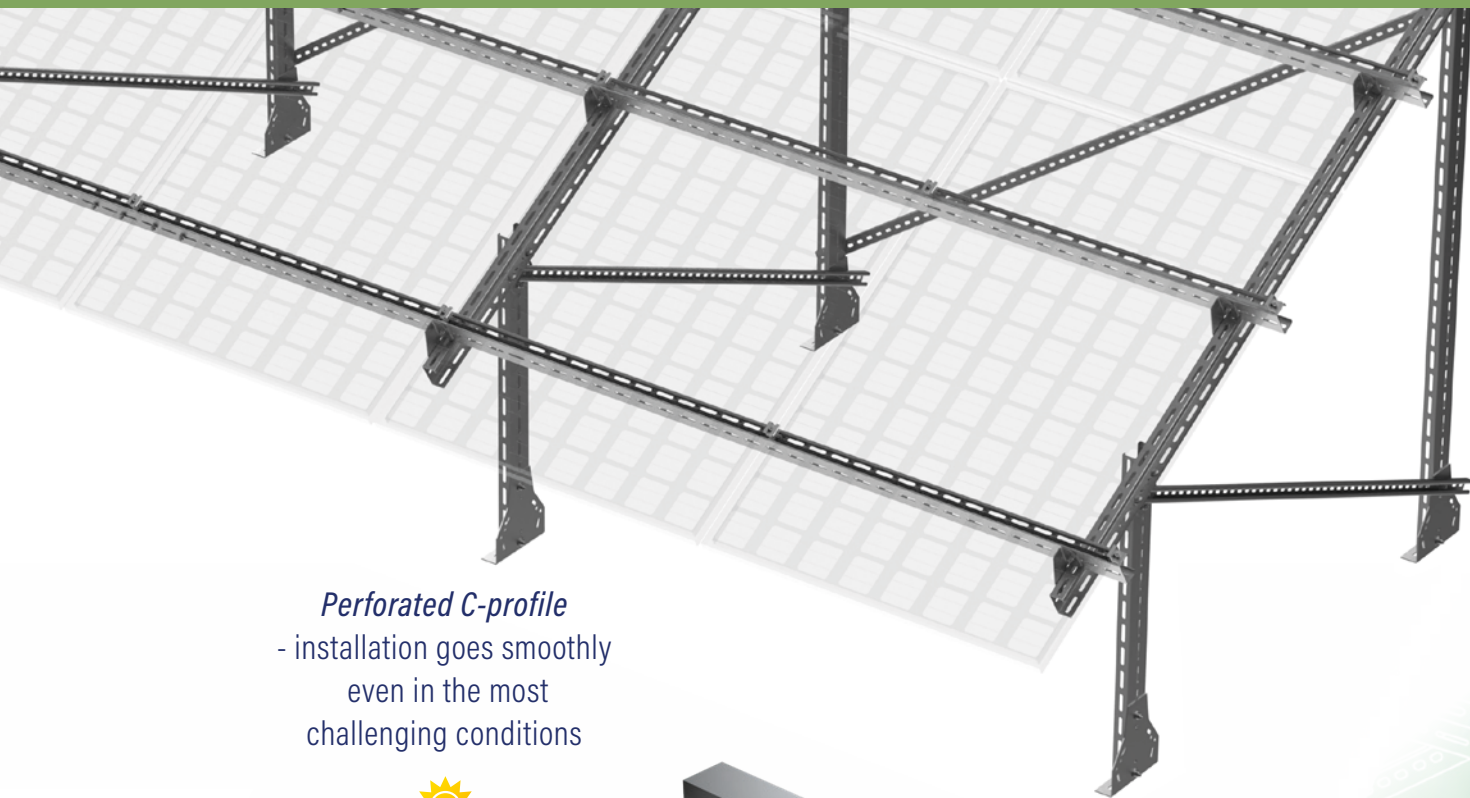
Installation angles  
30° and 40°  
(Maximum panel size  
1800 x 1200 mm)

 **MEKA**<sup>®</sup>  
**SOLAR**



# RENEWABLE ENERGY SOLUTIONS - FROM MEKA

Ground-mounted solar panel system and  
suitable wire mesh trays



## *Perforated C-profile*

- installation goes smoothly  
even in the most  
challenging conditions



## *Innovative bracket*

- easy fixing of panels from  
underneath the panels



## *Easy installation, quick deployment*

Install smoothly with easy to follow  
installation instructions  
and our experienced product support

**[technicalsupport@meka.eu](mailto:technicalsupport@meka.eu)**

Download the installation instructions  
from our website



# Table of contents

---

<b>MEKA SOLAR NORDIC PV SYSTEM - COMPLETE GROUND MOUNTING SET</b>	Nordic PV System GS3 2×6 Solar Foot	10
	Nordic PV System GS3 2×6 Piling	10
	Nordic PV System GS3 2×12 Solar Foot	11
	Nordic PV System GS3 2×12 Junttaus	11
<b>MEKA SOLAR NORDIC PV SYSTEM PARTS</b>	C-PROFILE 48×98 XPG	12
	AS RAIL HDG / XPG	12
	SOLAR FOOT 48×98 XPG	12
	C-PROFILE BS XPG	12
	C-PROFILE J XPG	13
	RTF-S-10 XPG	13
	AL K M10 HDG	13
	RS 8 HDG	13
	AL M10 HDG	13
	RS SOLAR AS	13
	SOLAR MC	14
	SOLAR EC	14
	C-PROFILE SC XPG	14
<b>MEKA SOLAR NORDIC PV SYSTEM - WIRE MESH TRAYS</b>	Wire mesh tray WMT-30	15
	Wire mesh tray WMT-50	16
	Wire mesh tray WMT-100	17
	Wire mesh tray WMT-150	18
	Snap in connector WMT SC1	19
	Snap in connector WMT SC2	19
	Connector set WMT CL	20
	Connector plate WMT CL1	20
	Connection set WMT UC	21
	Connection plate WMT UC1	21
	Connection plate WMT UC1D	22
	End plug WMT EP4 and WMT EP5	22
	Wall bracket WMT WB1	23
	Wall bracket WMT WB2	23
<b>MEKA SOLAR NORDIC PV SYSTEM - GENERAL INSTALLATION PARTS</b>	Cable clamp CCB-12 PG	24
	Beam bracket PK1	24
	Wall support VK	25
	Sliding nut SMT	26
	Sliding nut TB	26
	Earthing terminal PE	27
	End plug SP	27



# COMPLETE GROUND MOUNTING SET

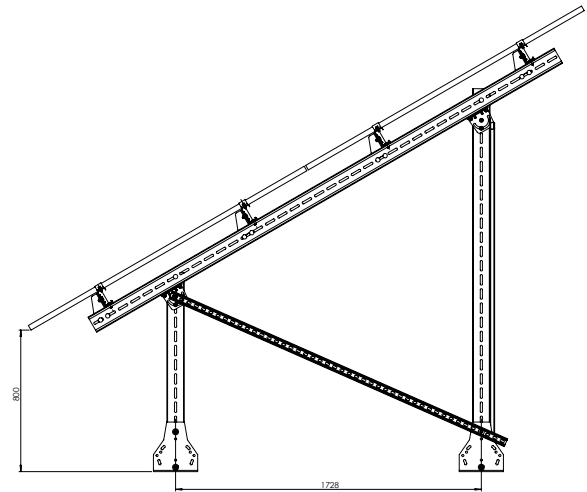
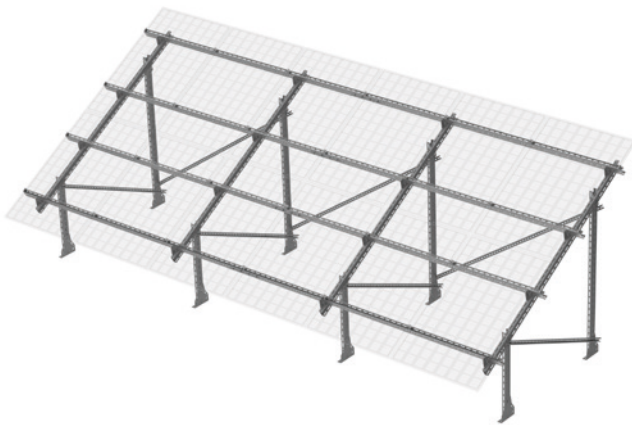
## Nordic PV System GS3 2×6 Solar Foot

### Ground mounting system for solar panels

Vertical mounting of panels. Two panels on top of each other and six next to each other. The mounting angle of the panels is 30°. Solar Foot bracket for ground screws or concrete foundation.

### Suitable solar panel dimensions:

Maximum size of solar panels 1800\*1200 mm.  
Frame thickness 30-35 mm.



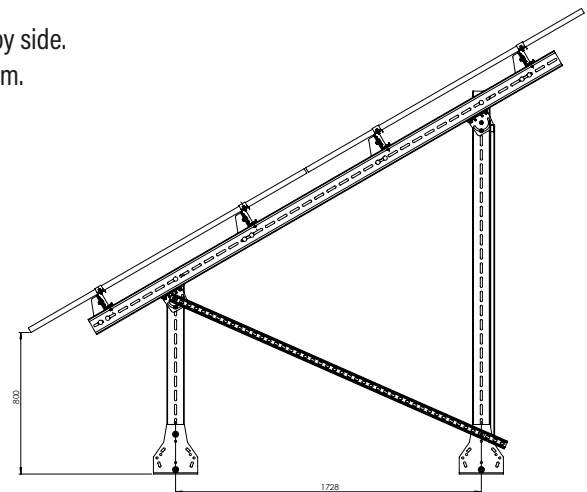
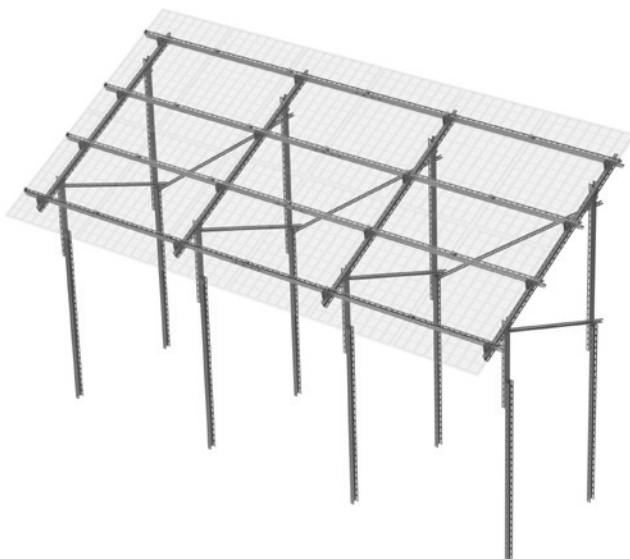
Snro 8004270

### Ground mounting system for solar panels

Installing the panels vertically with two panels stacked and six side by side. The angle of the panels is 30°. To be piled. The depth of the piling is 2 m.

### Suitable solar panel dimensions:

Maximum size of solar panels 1800\*1200 mm.  
Frame thickness 30-35 mm.



Snro 8004271





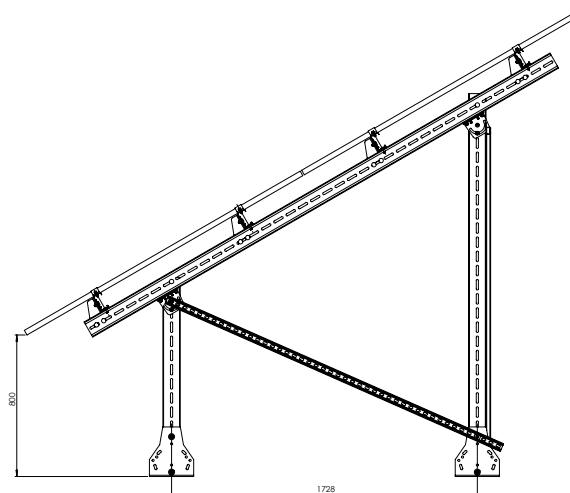
## Nordic PV System GS3 2×12 Solar Foot

### Ground mounting system for solar panels

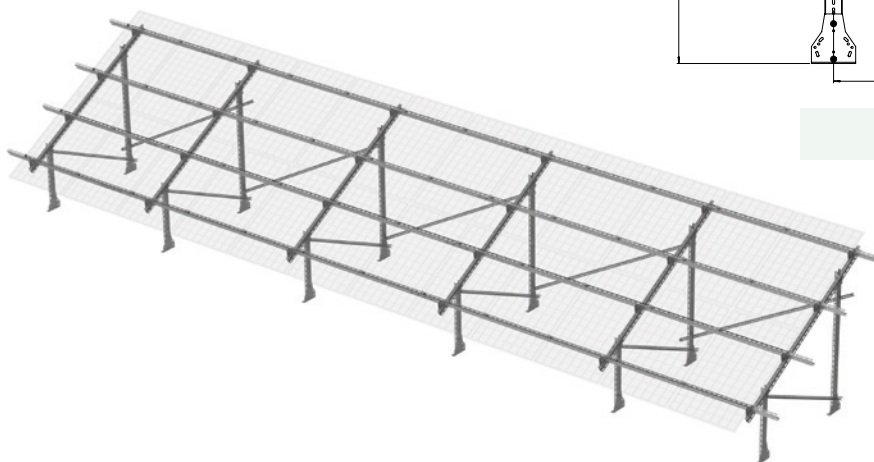
Vertical mounting of panels. Two panels on top of each other and twelve next to each other. The mounting angle of the panels is 30°. Solar Foot bracket for ground screws or concrete foundation.

### Suitable solar panel dimensions:

The maximum size of solar panels 1800\*1200 mm.  
Frame thickness 30-35 mm.



**Snro 8004272**



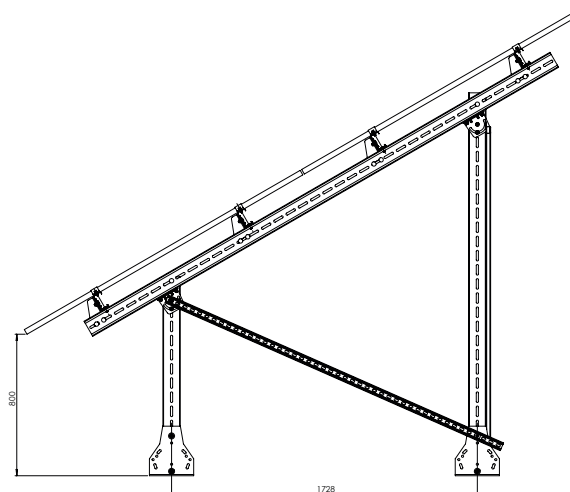
## Nordic PV System GS3 2×12 Junttaus

### Ground mounting system for solar panels

Vertical mounting of panels. Two panels on top of each other and twelve next to each other. Panel mounting angle 30°. Piled. The depth of the pile is 2 m.

### Suitable solar panel dimensions:

The maximum size of solar panels 1800\*1200 mm.  
Frame thickness 30-35 mm.



**Snro 8004273**

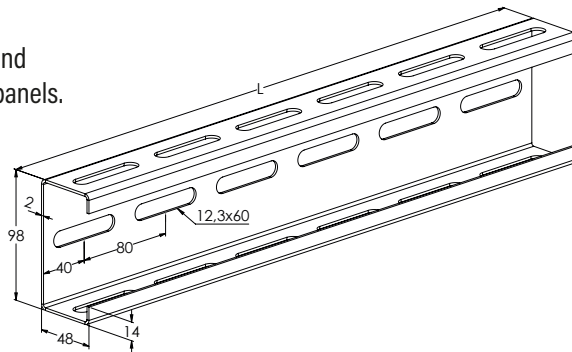


# MEKA SOLAR NORDIC PV SYSTEM PARTS

## C-PROFILE 48×98 XPG

### C-Profilili

C-Profile is used in the ground mounting system for solar panels.

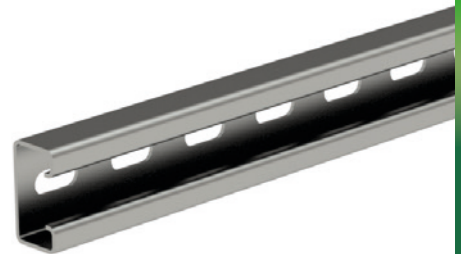
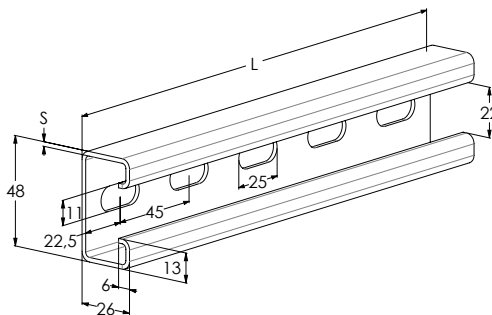


XPG

## AS RAIL HDG / XPG

### Mounting rail

Solar panel support rail, used in the ground mounting system of solar panels.



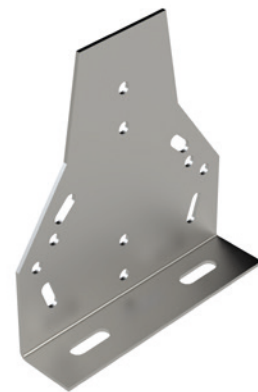
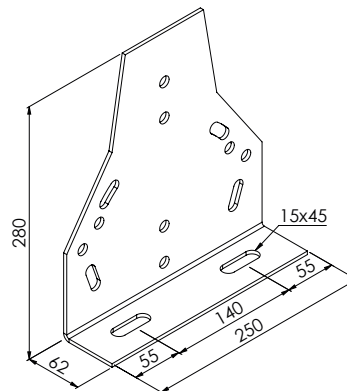
HDG

XPG

## SOLAR FOOT 48×98 XPG

### Fastener for concrete

Mounting bracket for the solar panel ground-mounted system, for concrete foundation or screw pile. Used as part of the solar panel ground-mounted system.

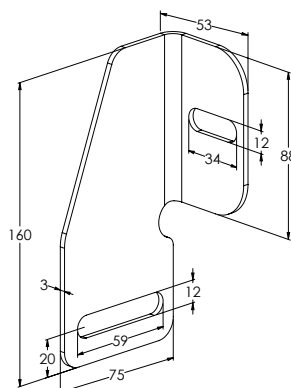


XPG

## C-PROFILE BS XPG

### C-Profile back support

C-Profile back support, is used in the ground-mounted solar panel system.



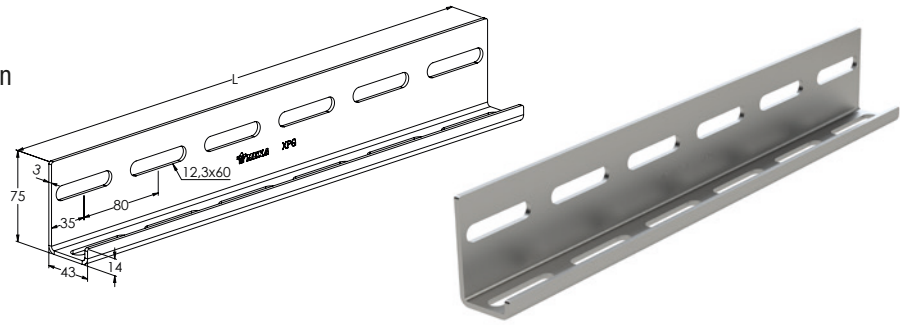
XPG



## C-PROFILE J XPG

### C-Profile extension

C-Profile extension, can be used to join two C-Profiles together and extend them into a longer, unified piece.

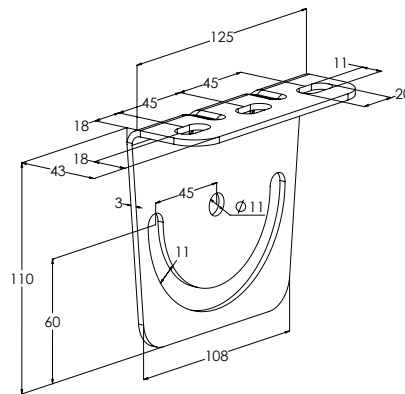


XPG

## RTF-S-10 XPG

### Fastener

The support for the legs of the ground-mounted solar panel system. In the ground-mounted system, the RTF-S-10 is attached to the end of the C-profile acting as a leg to support the angled C-profile.



XPG

## AL K M10 HDG

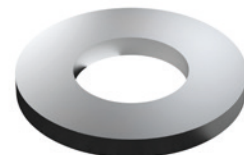
### Washer



HDG

## AL M10 HDG

### Washer

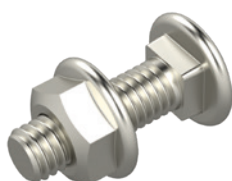


XPG

## RS 8 HDG

### Bolt set M10x25.

Includes screw and nut.



HDG

## RS SOLAR AS

### Bolt set

Screw set for AS rail for solar panels for ground installations.



XPG



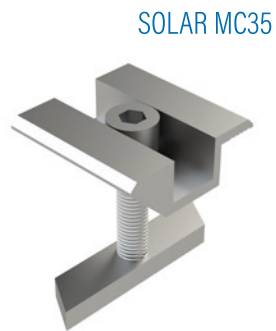


# SOLAR MC

## Solar panel clamp

Middle clamp for solar panel, for panels with a thickness of 30-40 mm. Attached to the C-profile in solar panel systems.

SRNO	PRODUCT x = stock product	WGT. kg / pc	PACKAGE
8004230	x SOLAR MC30	0.066	1 PCE
8004231	x SOLAR MC35	0.068	1 PCE
8004232	x SOLAR MC40	0.07	1 PCE

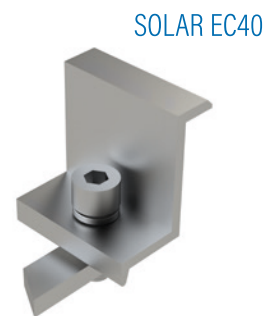
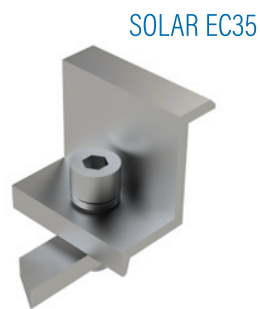
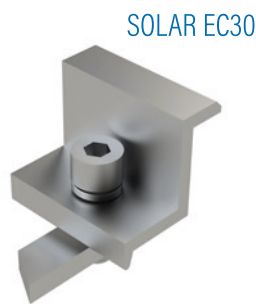


# SOLAR EC

## Solar panel clamp

End clamp for solar panel, for panels with a thickness of 30-40 mm. Attached to the C-profile in solar panel systems.

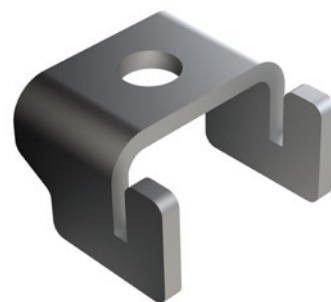
SRNO	PRODUCT x = stock product	WGT. kg / pc	PACKAGE
8004235	x SOLAR EC30	0.064	1 PCE
8004236	x SOLAR EC35	0.066	1 PCE
8004237	x SOLAR EC40	0.0663	1 PCE



# C-PROFILE SC XPG

## C-Profile Solar Clamp

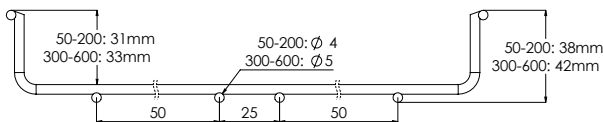
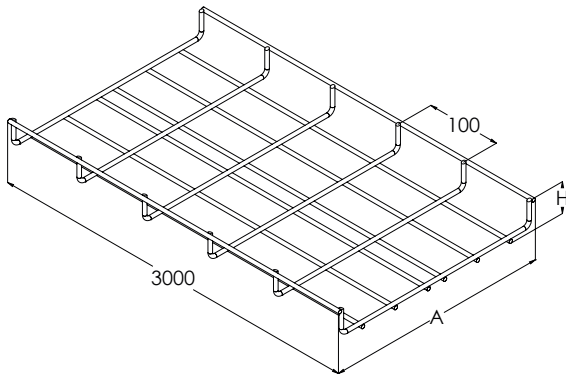
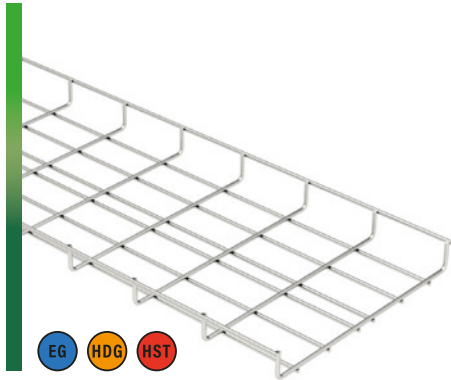
Solar panel clamp for C-Profile, Solar ECXX or Solar MCXX is also required.



# Wire mesh tray WMT-30

30 mm height wire mesh trays.

Wire mesh trays are used mainly for lower load capacities, lightweight cables, angular lines or at places with special requirements for ventilation or hygienic e.g. ICT, food industry and renewable energy solutions.



SRNO	PRODUCT x = stock product	WGT. kg / pc	A mm	H mm	PACKAGE
1444999	WMT-30-50 L=3000 EG	1.5	50	38	120 PCE / 360 MTR
1448400	x WMT-30-70 L=3000 EG	1.55	70	38	88 PCE / 264 MTR
1448401	x WMT-30-100 L=3000 EG	1.64	100	38	64 PCE / 192 MTR
1448402	x WMT-30-200 L=3000 EG	2.55	200	38	64 PCE / 192 MTR
1448403	x WMT-30-300 L=3000 EG	5.39	300	42	30 PCE / 90 MTR
1448404	WMT-30-400 L=3000 EG	6.81	400	42	32 PCE / 96 MTR
1448405	WMT-30-500 L=3000 EG	8.22	500	42	32 PCE / 96 MTR
1448406	WMT-30-600 L=3000 EG	9.63	600	42	32 PCE / 96 MTR

**EG** Electroplated with zinc after manufacturing in accordance with standard EN ISO 2081 : C1-C2

SRNO	PRODUCT x = stock product	WGT. kg / pc	A mm	H mm	PACKAGE
1448499	WMT-30-50 L=3000 HDG	1.7	50	38	120 PCE / 360 MTR
1448500	WMT-30-70 L=3000 HDG	1.75	70	38	88 PCE / 264 MTR
1448501	WMT-30-100 L=3000 HDG	1.85	100	38	64 PCE / 192 MTR
1448502	WMT-30-200 L=3000 HDG	2.88	200	38	64 PCE / 192 MTR
1448503	WMT-30-300 L=3000 HDG	6.09	300	42	30 PCE / 90 MTR
1448504	WMT-30-400 L=3000 HDG	7.7	400	42	32 PCE / 96 MTR
1448505	WMT-30-500 L=3000 HDG	9.29	500	42	32 PCE / 96 MTR
1448506	WMT-30-600 L=3000 HDG	10.88	600	42	32 PCE / 96 MTR

**HDG** Manufactured of stainless steel in accordance with standard EN 10088:C1-C4

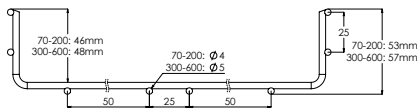
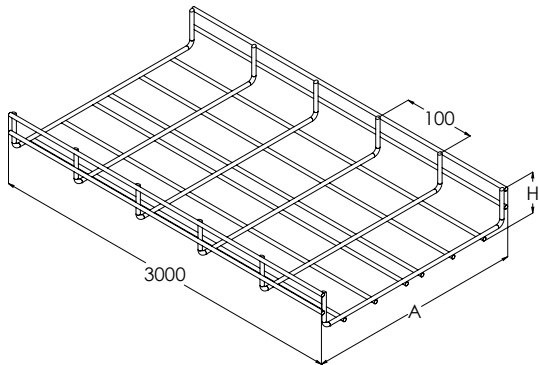
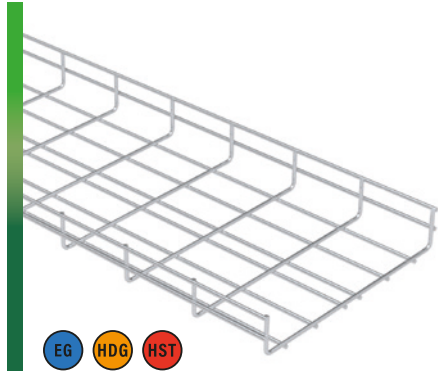
SRNO	PRODUCT x = stock product	WGT. kg / pc	A mm	H mm	PACKAGE
1448599	WMT-30-50 L=3000 HST	1.54	50	38	120 PCE / 360 MTR
1448600	x WMT-30-70 L=3000 HST	1.59	70	38	88 PCE / 264 MTR
1448601	WMT-30-100 L=3000 HST	1.68	100	38	64 PCE / 192 MTR
1448602	WMT-30-200 L=3000 HST	2.62	200	38	64 PCE / 192 MTR
1448603	WMT-30-300 L=3000 HST	5.53	300	42	30 PCE / 90 MTR
1448604	WMT-30-400 L=3000 HST	6.99	400	42	32 PCE / 96 MTR
1448605	WMT-30-500 L=3000 HST	8.43	500	42	32 PCE / 96 MTR
1448606	WMT-30-600 L=3000 HST	9.88	600	42	32 PCE / 96 MTR

**HST** Hot-dip galvanized after manufacturing in accordance with standard EN ISO 1461: C1-CX

# Wire mesh tray WMT-50

50 mm height wire mesh trays.

Wire mesh trays are used mainly for lower load capacities, lightweight cables, angular lines or at places with special requirements for ventilation or hygienic e.g. ICT, food industry and renewable energy solutions.



SRNO	PRODUCT x = stock product	WGT. kg / pc	A mm	H mm	PACKAGE
1448407	x WMT-50-70 L=3000 EG	2.23	70	53	88 PCE / 264 MTR
1448408	x WMT-50-100 L=3000 EG	2.32	100	53	64 PCE / 192 MTR
1448409	x WMT-50-200 L=3000 EG	3.23	200	53	64 PCE / 192 MTR
1448410	x WMT-50-300 L=3000 EG	6.46	300	57	48 PCE / 144 MTR
1448411	WMT-50-400 L=3000 EG	7.87	400	57	32 PCE / 96 MTR
1448412	WMT-50-500 L=3000 EG	9.29	500	57	32 PCE / 96 MTR
1448413	WMT-50-600 L=3000 EG	10.7	600	57	32 PCE / 96 MTR

**EG** Electroplated with zinc after manufacturing in accordance with standard EN ISO 2081 : C1-C2

SRNO	PRODUCT x = stock product	WGT. kg / pc	A mm	H mm	PACKAGE
1448507	x WMT-50-70 L=3000 HDG	2.52	70	53	88 PCE / 264 MTR
1448508	x WMT-50-100 L=3000 HDG	2.62	100	53	64 PCE / 192 MTR
1448509	x WMT-50-200 L=3000 HDG	3.65	200	53	64 PCE / 192 MTR
1448510	WMT-50-300 L=3000 HDG	7.3	300	57	48 PCE / 144 MTR
1448511	WMT-50-400 L=3000 HDG	8.89	400	57	32 PCE / 96 MTR
1448512	WMT-50-500 L=3000 HDG	10.5	500	57	32 PCE / 96 MTR
1448513	WMT-50-600 L=3000 HDG	12.09	600	57	32 PCE / 96 MTR

**HDG** Hot-dip galvanized after manufacturing in accordance with standard EN ISO 1461: C1-C4

SRNO	PRODUCT x = stock product	WGT. kg / pc	A mm	H mm	PACKAGE
1448607	WMT-50-70 L=3000 HST	2.29	70	53	88 PCE / 264 MTR
1448608	x WMT-50-100 L=3000 HST	2.38	100	53	64 PCE / 192 MTR
1448609	x WMT-50-200 L=3000 HST	3.31	200	53	64 PCE / 192 MTR
1448610	WMT-50-300 L=3000 HST	6.63	300	57	48 PCE / 144 MTR
1448611	WMT-50-400 L=3000 HST	8.08	400	57	32 PCE / 96 MTR
1448612	WMT-50-500 L=3000 HST	9.53	500	57	32 PCE / 96 MTR
1448613	WMT-50-600 L=3000 HST	10.98	600	57	32 PCE / 96 MTR

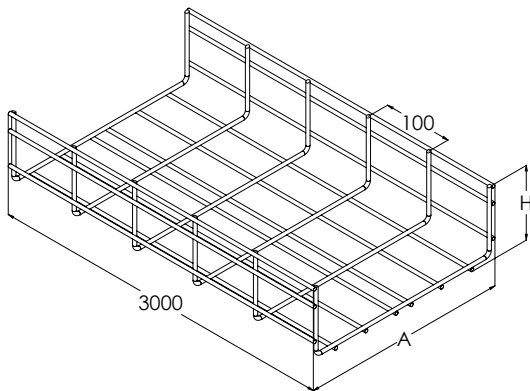
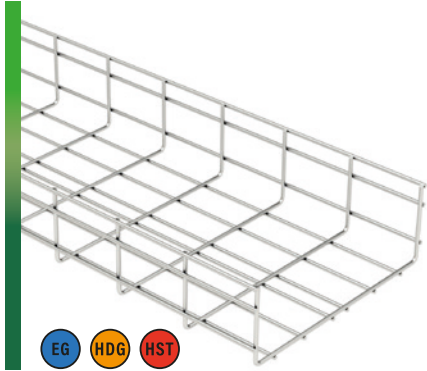
**HST** Manufactured of stainless steel in accordance with standard EN 10088 : C1-CX





# Wire mesh tray WMT-100

100 mm height wire mesh trays. Wire mesh trays are used mainly for lower load capacities, lightweight cables, angular lines or at places with special requirements for ventilation or hygienic e.g. ICT, food industry and renewable energy solutions.



SRNO	PRODUCT x = stock product	WGT. kg / pc	A mm	H mm	PACKAGE
1448415	WMT-100-100 L=3000 EG	3.23	100	103	75 PCE / 225 MTR
1448416	WMT-100-200 L=3000 EG	4.13	200	103	40 PCE / 120 MTR
1448417	WMT-100-300 L=3000 EG	7.88	300	107	30 PCE / 90 MTR
1448418	WMT-100-400 L=3000 EG	9.29	400	107	20 PCE / 60 MTR
1448419	WMT-100-500 L=3000 EG	10.7	500	107	20 PCE / 60 MTR
1448420	WMT-100-600 L=3000 EG	12.12	600	107	20 PCE / 60 MTR

**EG** Electroplated with zinc after manufacturing in accordance with standard EN ISO 2081 : C1-C2

SRNO	PRODUCT x = stock product	WGT. kg / pc	A mm	H mm	PACKAGE
1448515	WMT-100-100 L=3000 HDG	3.65	100	103	75 PCE / 225 MTR
1448516	WMT-100-200 L=3000 HDG	4.67	200	103	40 PCE / 120 MTR
1448517	WMT-100-300 L=3000 HDG	8.9	300	107	30 PCE / 90 MTR
1448518	WMT-100-400 L=3000 HDG	10.5	400	107	20 PCE / 60 MTR
1448519	WMT-100-500 L=3000 HDG	12.09	500	107	20 PCE / 60 MTR
1448520	WMT-100-600 L=3000 HDG	13.69	600	107	20 PCE / 60 MTR

**HDG** Hot-dip galvanized after manufacturing in accordance with standard EN ISO 1461: C1-C4

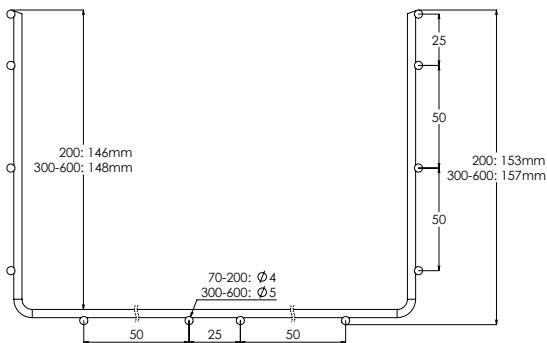
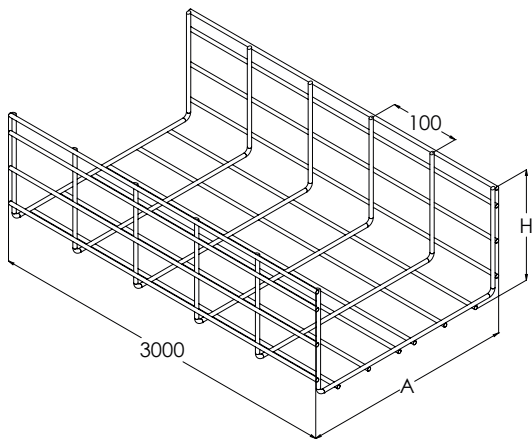
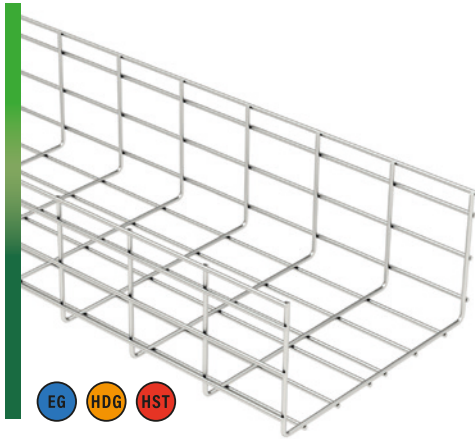
SRNO	PRODUCT x = stock product	WGT. kg / pc	A mm	H mm	PACKAGE
1448615	WMT-100-100 L=3000 HST	3.31	100	103	75 PCE / 225 MTR
1448616	WMT-100-200 L=3000 HST	4.24	200	103	40 PCE / 120 MTR
1448617	WMT-100-300 L=3000 HST	8.08	300	107	30 PCE / 90 MTR
1448618	WMT-100-400 L=3000 HST	9.53	400	107	20 PCE / 60 MTR
1448619	WMT-100-500 L=3000 HST	10.98	500	107	20 PCE / 60 MTR
1448620	WMT-100-600 L=3000 HST	12.43	600	107	20 PCE / 60 MTR

**HST** Manufactured of stainless steel in accordance with standard EN 10088 : C1-CX



# Wire mesh tray WMT-150

150 mm height wire mesh trays. Wire mesh trays are used mainly for lower load capacities, lightweight cables, angular lines or at places with special requirements for ventilation or hygienic e.g. ICT, food industry and renewable energy solutions.



SRNO	PRODUCT x = stock product	WGT. kg / pc	A mm	H mm	PACKAGE
1448423	WMT-150-200 L=3000 EG	5.04	200	153	32 PCE / 96 MTR
1448424	WMT-150-300 L=3000 EG	9.29	300	157	24 PCE / 72 MTR
1448425	WMT-150-400 L=3000 EG	10.7	400	157	16 PCE / 48 MTR
1448426	WMT-150-500 L=3000 EG	12.12	500	157	16 PCE / 48 MTR
1448427	WMT-150-600 L=3000 EG	13.53	600	157	16 PCE / 48 MTR

**EG** Electroplated with zinc after manufacturing in accordance with standard EN ISO 2081 : C1-C2

SRNO	PRODUCT x = stock product	WGT. kg / pc	A mm	H mm	PACKAGE
1448523	WMT-150-200 L=3000 HDG	5.7	200	153	32 PCE / 96 MTR
1448524	WMT-150-300 L=3000 HDG	10.5	300	157	24 PCE / 72 MTR
1448525	WMT-150-400 L=3000 HDG	12.09	400	157	16 PCE / 48 MTR
1448526	WMT-150-500 L=3000 HDG	13.7	500	157	16 PCE / 48 MTR
1448527	WMT-150-600 L=3000 HDG	15.29	600	157	16 PCE / 48 MTR

**HDG** Hot-dip galvanized after manufacturing in accordance with standard EN ISO 1461: C1-C4

SRNO	PRODUCT x = stock product	WGT. kg / pc	A mm	H mm	PACKAGE
1448623	WMT-150-200 L=3000 HST	5.17	200	153	32 PCE / 96 MTR
1448624	WMT-150-300 L=3000 HST	9.53	300	157	24 PCE / 72 MTR
1448625	WMT-150-400 L=3000 HST	10.98	400	157	16 PCE / 48 MTR
1448626	WMT-150-500 L=3000 HST	12.44	500	157	16 PCE / 48 MTR
1448627	WMT-150-600 L=3000 HST	13.88	600	157	16 PCE / 48 MTR

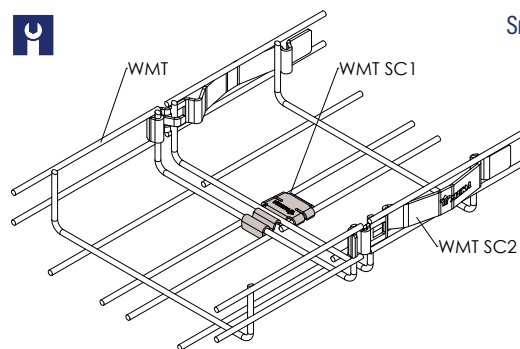
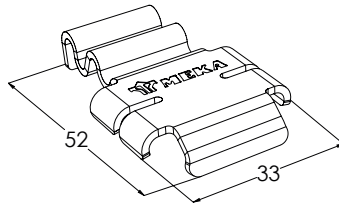
**HST** Manufactured of stainless steel in accordance with standard EN 10088 : C1-CX



# Snap in connector WMT SC1

Snap in connectors WMT SC1 are used for fast extension of 70-200 mm wide and 50-150 mm height wire mesh trays. Installation on bottom of trays. Correctly installed connectors create a sufficient electrical conductivity, which eliminates the need to install a separate grounding wire between wire mesh trays.

SRNO	PRODUCT x = stock product	WGT. kg / pc	PACKAGE
1448723	x WMT SC1 EG	0.02	10 PCE / 1 BG
EG	Electroplated with zinc after manufacturing in accordance with standard EN ISO 2081 : C1-C2		



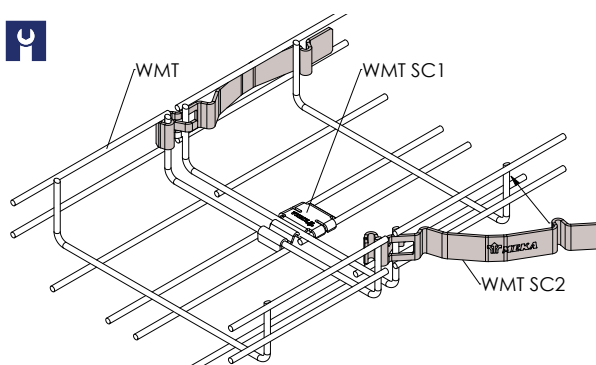
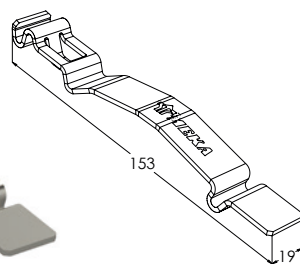
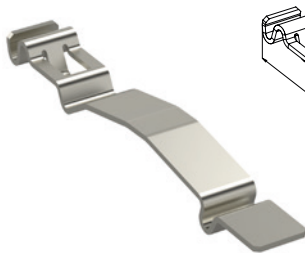
Snap in connector WMT SC1 is compatible with wire mesh trays that are 70-200 mm wide.

Wire mesh quick joints are made by first slotting and pushing snap in connector WMT SC1 in to the bottom of the tray, to the joint of the wire mesh trays, and then slotting and pushing in snap in connector WMT SC2 on both sides of the tray.

# Snap in connector WMT SC2

Snap in connectors WMT SC2 are used for fast extension of 70-200 mm wide and 50-150 mm height wire mesh trays. Installation on both sides of trays. Correctly installed connectors create a sufficient electrical conductivity, which eliminates the need to install a separate grounding wire between wire mesh trays. Sales unit of WMT SC2 is package that includes 10 connectors.

SRNO	PRODUCT x = stock product	WGT. kg / pc	PACKAGE
1448726	x WMT SC2 EG	0.06	10 PCE / 1 BG
EG	Electroplated with zinc after manufacturing in accordance with standard EN ISO 2081 : C1-C2		
SRNO	PRODUCT x = stock product	WGT. kg / pc	PACKAGE
1448727	x WMT SC2 HDG	0.06	10 PCE / 1 BG
HDG	HDG or corresponding corrosion protection : C1-C4		
SRNO	PRODUCT x = stock product	WGT. kg / pc	PACKAGE
1448728	WMT SC2 HST	0.06	10 PCE / 1 BG
HST	Manufactured of stainless steel in accordance with standard EN 10088 : C1-CX		



Snap in connector WMT SC2 is compatible with wire mesh trays that are 70-200mm wide.

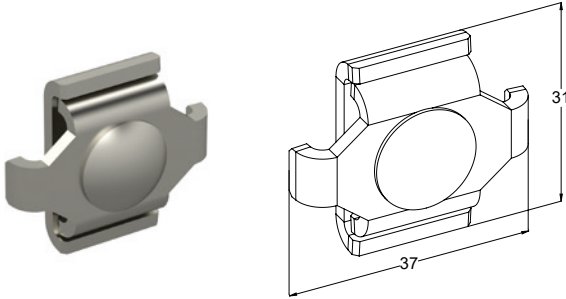
Wire mesh quick joints are made by first slotting and pushing snap in connector WMT SC1 in to the bottom of the tray, to the joint of the wire mesh trays, and then slotting and pushing in connector WMT SC2 on both sides of the tray.



See the installation video.

# Connector set WMT CL

Connector sets WMT CL are used to extend wire mesh trays, attach trays to supports as well as make horizontal bends. Correctly installed joints create a sufficient electrical conductivity, which eliminates the need to install a separate grounding wire between wire mesh trays. Product set includes two plates, bolt and nut for fixing.



SRNO	PRODUCT x = stock product	WGT. kg / pc	PACKAGE
1448710	x WMT CL EG	0.032	20 PCE / 1 BG

EG Electroplated with zinc after manufacturing in accordance with standard EN ISO 2081 : C1-C2

Product includes screw set: 1448720 RS 4 EG (1 PCE)

SRNO	PRODUCT x = stock product	WGT. kg / pc	PACKAGE
1448703	x WMT CL HDG	0.033	20 PCE / 1 BG

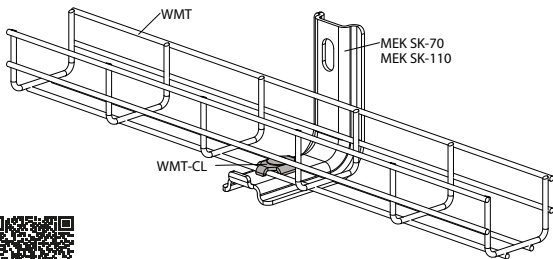
HDG HDG or corresponding corrosion protection : C1-C4

Product includes screw set: 1448721 RS 4 HDG (1 PCE)

SRNO	PRODUCT x = stock product	WGT. kg / pc	PACKAGE
1448706	x WMT CL HST	0.032	20 PCE / 1 BG

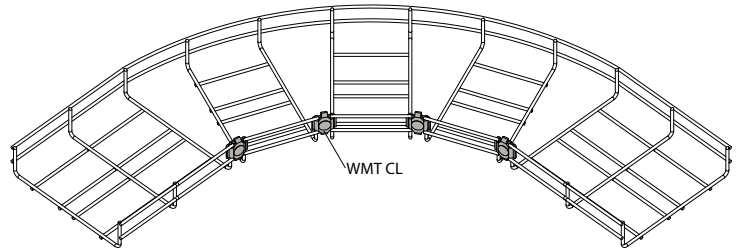
HST Manufactured of stainless steel in accordance with standard EN 10088 : C1-CX

Product includes screw set: 1448722 RS 4 HST (1 PCE)



See the installation video.

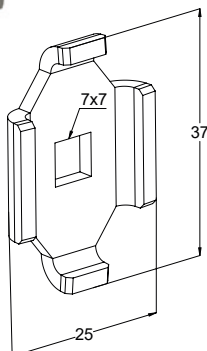
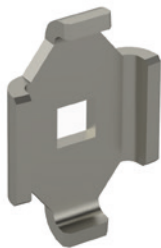
Wall bracket MEK SK can be attached to the wire mesh tray with connector set WMT CL.



90° bends can be formed with connector set WMT CL by cutting the wire mesh tray as shown in the image and joining the edges together.

# Connector plate WMT CL1

Connector plates WMT CL1 are used for mounting wire mesh trays to wall or floor. The plates are suitable for 70-100 mm width and 50-150 mm height trays. Sales unit of WMT CL1 is package that includes 20 pieces of WMT CL1.



SRNO	PRODUCT x = stock product	WGT. kg / pc	PACKAGE
1448712	x WMT CL1 EG	0.013	20 PCE / 1 BG

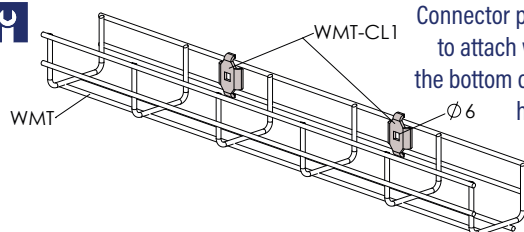
EG Electroplated with zinc after manufacturing in accordance with standard EN ISO 2081: C1-C2

SRNO	PRODUCT x = stock product	WGT. kg / pc	PACKAGE
1448709	x WMT CL1 HDG	0.014	20 PCE / 1 BG

HDG HDG or corresponding corrosion protection: C1-C4

SRNO	PRODUCT x = stock product	WGT. kg / pc	PACKAGE
1448700	x WMT CL1 HST	0.013	20 PCE / 1 BG

HST Manufactured of stainless steel in accordance with standard EN 10088 : C1-CX



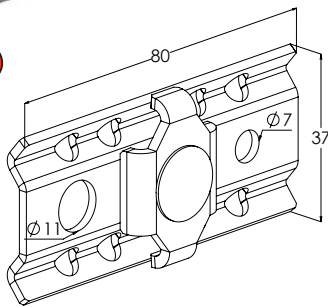
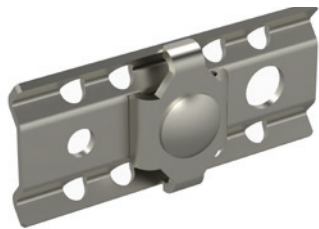
Connector plate WMT CL1 is used to attach wire mesh trays from the bottom or side in a vertical or horizontal orientation.





## Connection set WMT UC

Connection sets WMT UC are used to extend 50, 100 and 150 mm height wire mesh trays. Installation on both sides of trays. Correctly installed joints create a sufficient electrical conductivity, which eliminates the need to install a separate grounding wire between wire mesh trays. Product set includes plates UC1 and CL1, M6x20 bolt and M6 nut for fixing. Sales unit of WMT UC is package that includes 10 product sets.



See the installation video.

SRNO	PRODUCT x = stock product	WGT. kg / pc	PACKAGE
1448711	x WMT UC EG	0.061	10 PCE / 1 BG

EG Electroplated with zinc after manufacturing in accordance with standard EN ISO 2081: C1-C2

Product includes screw set: 1448720 RS 4 EG (1 PCE)

SRNO	PRODUCT x = stock product	WGT. kg / pc	PACKAGE
1448701	x WMT UC HDG	0.062	10 PCE / 1 BG

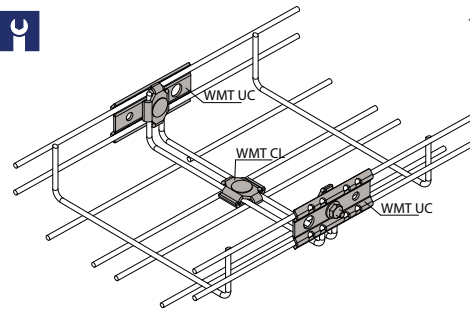
HDG HDG or corresponding corrosion protection : C1-C4

Product includes screw set: 1448721 RS 4 HDG (1 PCE)

SRNO	PRODUCT x = stock product	WGT. kg / pc	PACKAGE
1448702	x WMT UC HST	0.061	10 PCE / 1 BG

HST Manufactured of stainless steel in accordance with standard EN 10088 : C1-CX

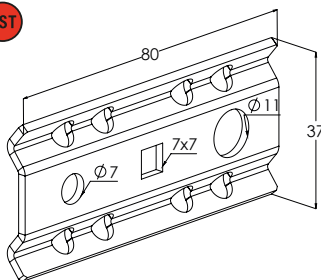
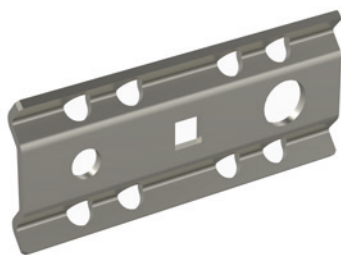
Product includes screw set: 1448722 RS 4 HST (1 PCE)



Two wire mesh trays can be joined together with two WMT UC connection sets and one WMT CL connector set.

## Connection plate WMT UC1

Connection plates WMT UC1 are used to support wire mesh trays from the bottom. Sales unit of WMT UC1 is package that includes 10 pieces of WMT UC1.



SRNO	PRODUCT x = stock product	WGT. kg / pc	PACKAGE
1448713	x WMT UC1 EG	0.041	10 PCE / 1 BG

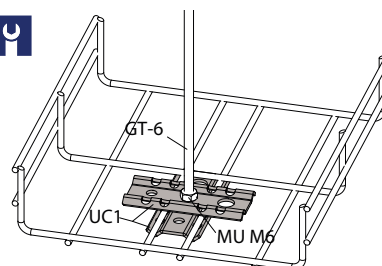
EG Electroplated with zinc after manufacturing in accordance with standard EN ISO 2081: C1-C2

SRNO	PRODUCT x = stock product	WGT. kg / pc	PACKAGE
1448704	WMT UC1 HDG	0.042	10 PCE / 1 BG

HDG HDG or corresponding corrosion protection : C1-C4

SRNO	PRODUCT x = stock product	WGT. kg / pc	PACKAGE
1448707	x WMT UC1 HST	0.041	10 PCE / 1 BG

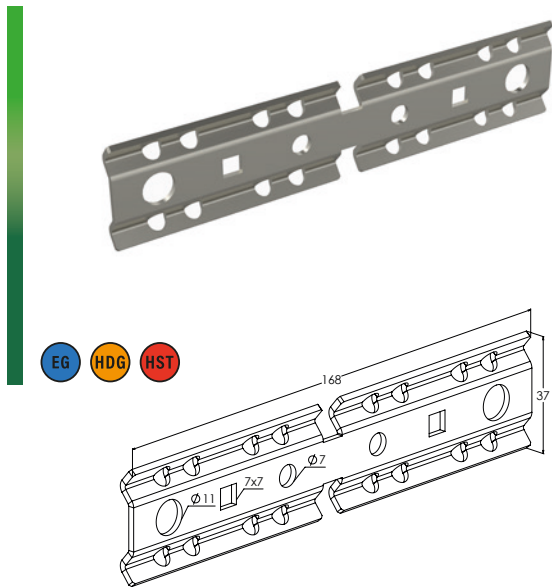
HST Manufactured of stainless steel in accordance with standard EN 10088 : C1-CX



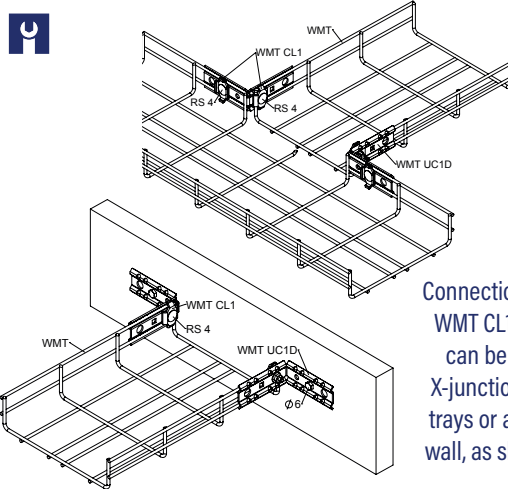
Wire mesh brackets can be suspended to the ceiling with two WMT UC1 connection plates. The wire mesh tray is attached between connection plates with threaded rod GT-6 and two MU M6 nuts.

# Connection plate WMT UC1D

WMT UC1D connection plates are used to make T- and X-connections in wire mesh trays as well as for mounting the ends of trays to a wall, floor or ceiling. Two WMT UC1D plates are needed for one connection or attachment. For fixing WMT UC1D to wire mesh trays plates WMT CL1 together with RS 4 bolt sets are suitable. Sales unit of WMT UC1D is package that includes 10 plates.



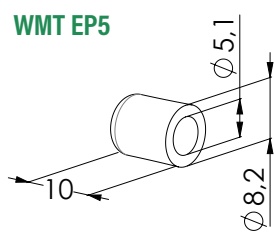
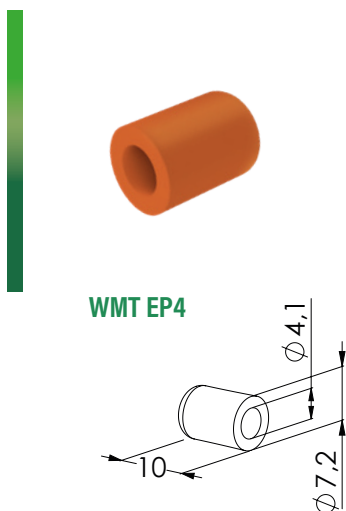
SRNO	PRODUCT x = stock product	WGT. kg / pc	PACKAGE
1448714	x WMT UC1D EG	0.083	10 PCE / 1 BG
EG		Electroplated with zinc after manufacturing in accordance with standard EN ISO 2081 : C1-C2	
SRNO	PRODUCT x = stock product	WGT. kg / pc	PACKAGE
1448705	x WMT UC1D HDG	0.084	10 PCE / 1 BG
HDG		HDG or corresponding corrosion protection : C1-C4	
SRNO	PRODUCT x = stock product	WGT. kg / pc	PACKAGE
1448708	x WMT UC1D HST	0.083	10 PCE / 1 BG
HST		Manufactured of stainless steel in accordance with standard EN 10088 : C1-CX	



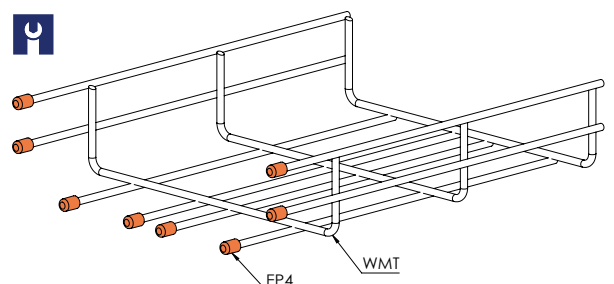
Connection plates WMT UC1D, WMT CL1 and screw set RS 4 can be used to make T- and X-junctions to the wire mesh trays or attach the tray to the wall, as shown in the images.

# End plug WMT EP4 and WMT EP5

End plugs WMT EP are used to cover wire mesh trays wires' ends. Depending on WMT-tray's type the 4 or 5 mm diameter end plugs have to be selected. End plugs are made of LDPE plastic, which is suitable for food and beverage applications. Orange colour plugs are visible in dim light that is important for security reason. Sales unit of WMT EP is package that includes 100 end plugs.



SRNO	PRODUCT x = stock product	PACKAGE
1448718	x WMT EP4	100 PCE / 1 BG
Orange plastic		
SRNO	PRODUCT x = stock product	PACKAGE
1448719	x WMT EP5	100 PCE / 1 BG
Orange plastic		

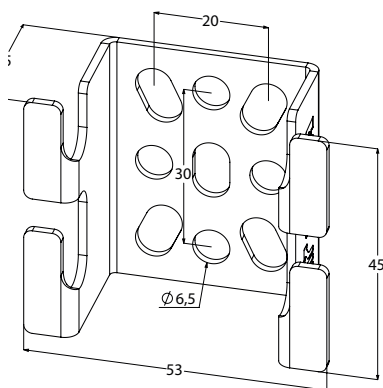


Press the plug on the ends of the cut wires.



## Wall bracket WMT WB1

Wall brackets WMT WB1 are used for mounting wire mesh trays to wall or floor. Suitable for 70-100 mm width and 50-150 mm height trays. Wire mesh trays can be fixed to wall brackets by bending brackets' hooks around the trays' wires.



SRNO	PRODUCT x = stock product	WGT. kg / pc	PACKAGE
1448740	x WMT WB1 PG	0.04	10 PCE

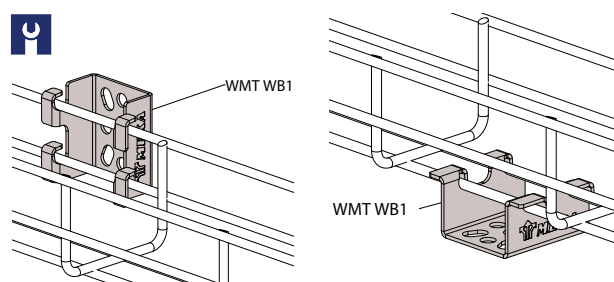
PG Manufactured of hot-dip galvanized steel in accordance with standard EN 10346 : C1-C2

SRNO	PRODUCT x = stock product	WGT. kg / pc	PACKAGE
1448741	x WMT WB1 HDG	0.042	10 PCE

HDG Hot-dip galvanized after manufacturing in accordance with standard EN ISO 1461: C1-C4

SRNO	PRODUCT x = stock product	WGT. kg / pc	PACKAGE
1448742	x WMT WB1 HST	0.041	10 PCE

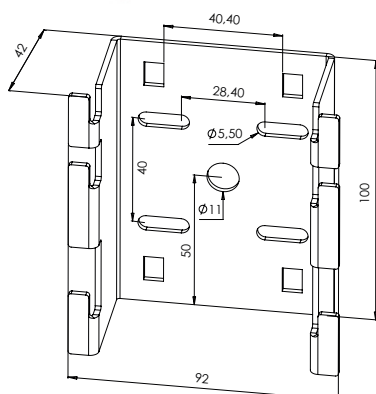
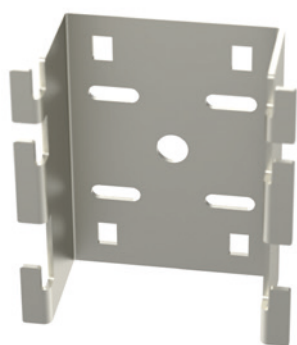
HST Manufactured of stainless steel in accordance with standard EN 10088: C1-CX



Wire mesh trays can be attached to the wall or floor with wall bracket WMT WB1. Attach the wire mesh tray to the hooks on the bracket and bend the hooks into the wire.

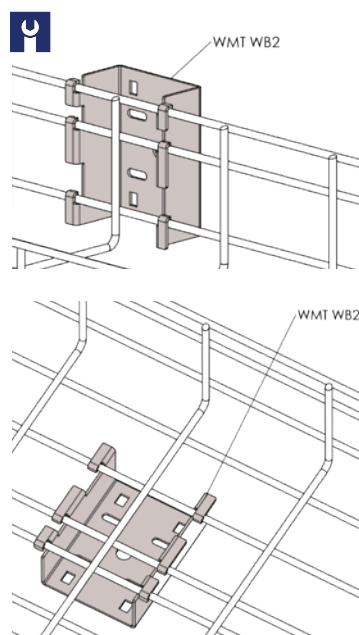
## Wall bracket WMT WB2

Wall brackets WMT WB2 are used for mounting wire mesh trays to wall or floor. Suitable for 100-600 mm width and 30-150 mm height trays. Wire mesh trays can be fixed to wall brackets by bending brackets' hooks around the trays' wires.



SRNO	PRODUCT x = stock product	WGT. kg / pc	PACKAGE
1448744	WMT WB2 XPG	0.232	10 PCE

XPG Manufactured of coated steel in accordance with standard EN 10346 : C1-C4



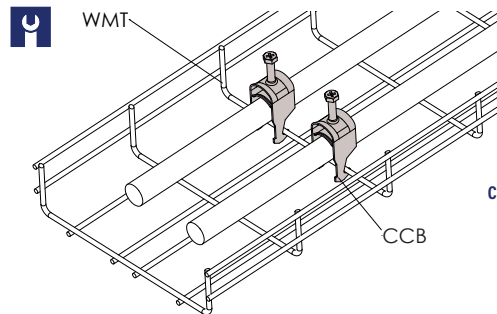
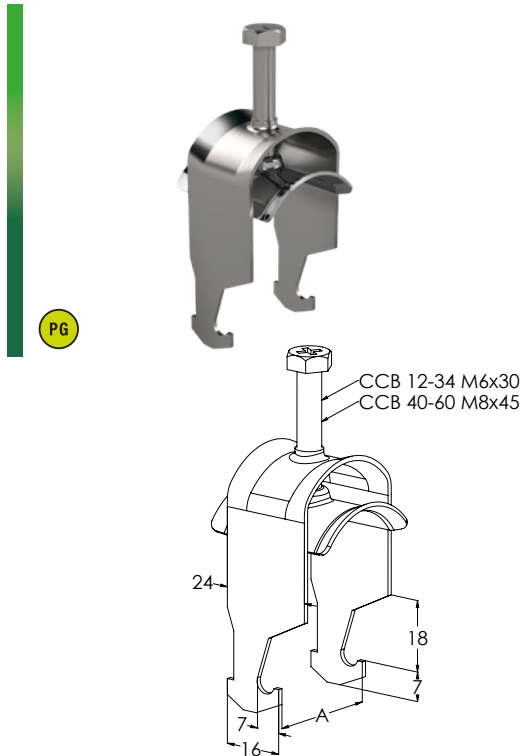
Wire mesh trays can be attached to the wall or floor with wall bracket WMT WB2. Attach the wire mesh tray to the hooks on the bracket and bend the hooks into the wire.

# Cable clamp CCB-12 PG

Cable clamps CCB are used to fix cables to cable ladders rungs from underneath, to wire mesh trays WMT and to rails CK. Tightening torque of clamps depends on size of clamps and is between 1 and 3 Nm. Sales unit of CCB clamps is package that includes 10 pieces of clamps.

SRNO	PRODUCT x = stock product	WGT. kg / pc	A mm	CABLE max. Ø mm	MOMENT max. Nm	PACKAGE
1342020	x CCB-12 PG	0.023	13	5-12 mm	1	10 PCE / 1 BG
1342021	x CCB-14 PG	0.026	15	10-14 mm	1	10 PCE / 1 BG
1342022	x CCB-18 PG	0.029	19	14-18 mm	1	10 PCE / 1 BG
1342023	x CCB-22 PG	0.032	23	17-22 mm	1.5	10 PCE / 1 BG
1342024	x CCB-26 PG	0.036	27	21-26 mm	1.5	10 PCE / 1 BG
1342025	x CCB-30 PG	0.043	31	25-30 mm	1.5	10 PCE / 1 BG
1342026	x CCB-34 PG	0.046	35	29-34 mm	1.5	10 PCE / 1 BG
1342027	x CCB-40 PG	0.083	41	35-40 mm	2	10 PCE / 1 BG
1342028	x CCB-46 PG	0.092	47	41-46 mm	2	10 PCE / 1 BG
1342029	x CCB-52 PG	0.101	53	47-52 mm	2	10 PCE / 1 BG
1342030	x CCB-60 PG	0.111	62	53-60 mm	3	10 PCE / 1 BG

**PG** Manufactured of hot-dip galvanized steel in accordance with standard EN 10346 : C1-C2



Cable clamp CCB is used to attach cables to wire mesh trays.

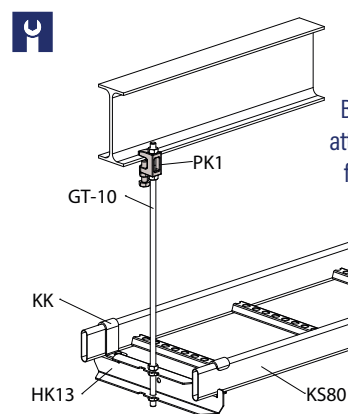
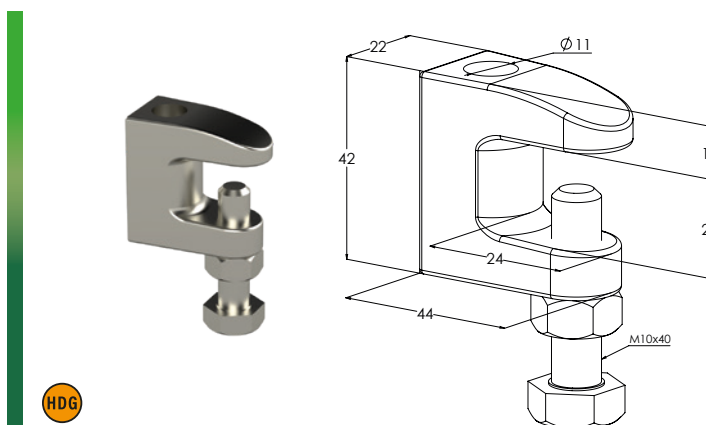
**Note!**  
Check the maximum allowed torque for cable clamp CCB from the chart above.

# Beam bracket PK1

Beam brackets PK1 are used to attach threaded rods GT-10 to I-beams. Threaded rods are attached to PK1 brackets by using MU M10 nuts. The thickness of the I-beam at the attachment point is max. 20 mm. Safe work load of PK1 brackets is 300 kg.

SRNO	PRODUCT x = stock product	WGT. kg / pc	LOADING kg / pc	PACKAGE
1449200	PK1 HDG	0.15	300	10 PCE

**HDG** Hot-dip galvanized after manufacturing in accordance with standard EN ISO 1461 : C1-C4



Beam bracket PK1 is attached to the lower flange of an I beam. The threaded rod GT-10 is attached to the beam bracket with nuts MU M10.



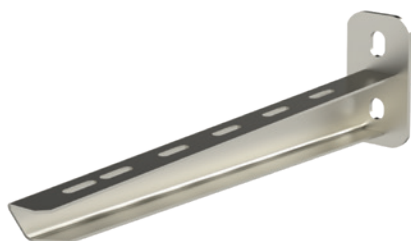


# Wall support VK

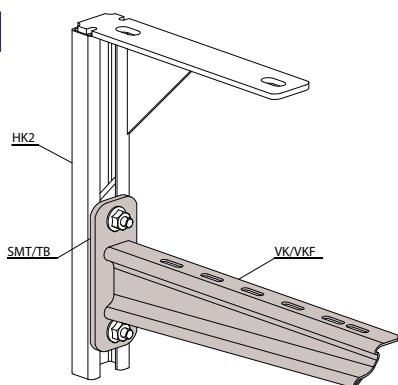
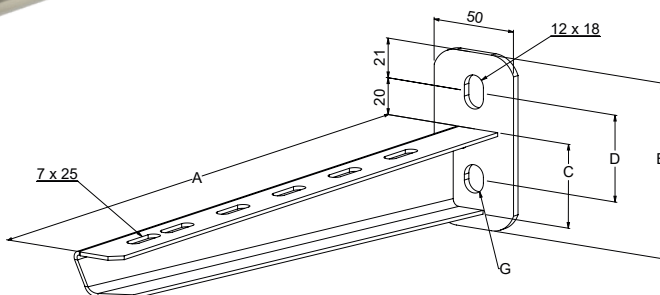
Wall supports VK are used for mounting cable ladders, cable trays and wire mesh trays directly to wall, AS-type mounting rails, HK- and TP2-type ceiling supports. For fastening to rails and supports sliding nuts SMT, TB and AKM and bolt sets RS can be used. The safe working load of VK wall supports is up to 200 kg.

SNRO	PRODUCT x = stock product	WGT. kg / pc	A mm	B mm	C mm	D mm	G mm	LOADING max. kg	PACKAGE
1449590	x VK-150 2KN HDG	0.35	190	93	37	46	12x15	200	10 PCE
1449591	x VK-200 2KN HDG	0.41	240	93	40	46	12x15	200	10 PCE
1449592	x VK-300 2KN HDG	0.55	340	93	45	46	12x15	200	10 PCE
1449593	x VK-400 2KN HDG	0.79	440	108	50	56	12x18	200	10 PCE
1449594	x VK-500 2KN HDG	1.12	540	155	74	118	12x18	200	10 PCE
1449595	x VK-600 2KN HDG	1.29	640	155	80	118	12x18	200	10 PCE

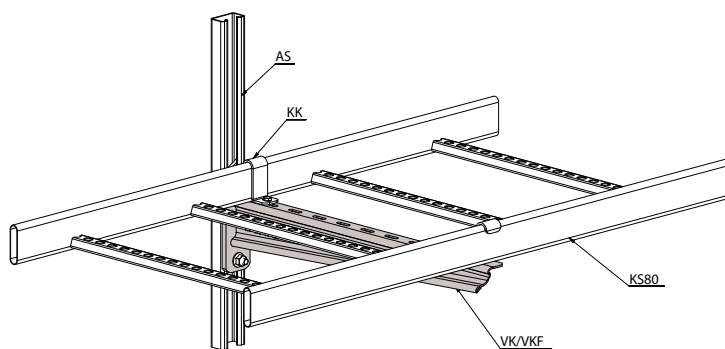
HDG Hot-dip galvanized after manufacturing in accordance with standard EN ISO 1461 : C1-C4



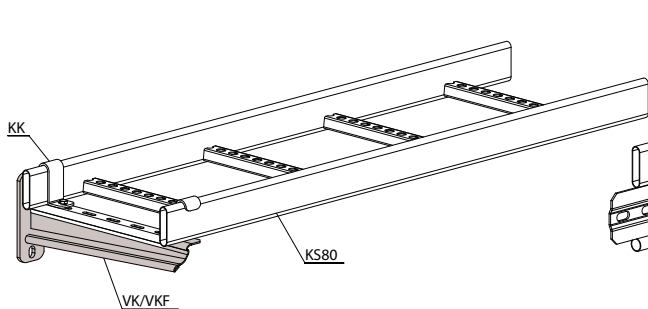
HDG



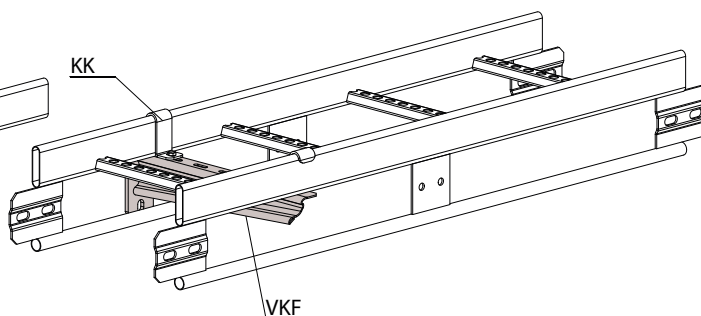
Wall support VK can be attached to ceiling support HK2 with sliding nut SMT or TB.



The cable ladder is attached to wall support VK with bracket KK.



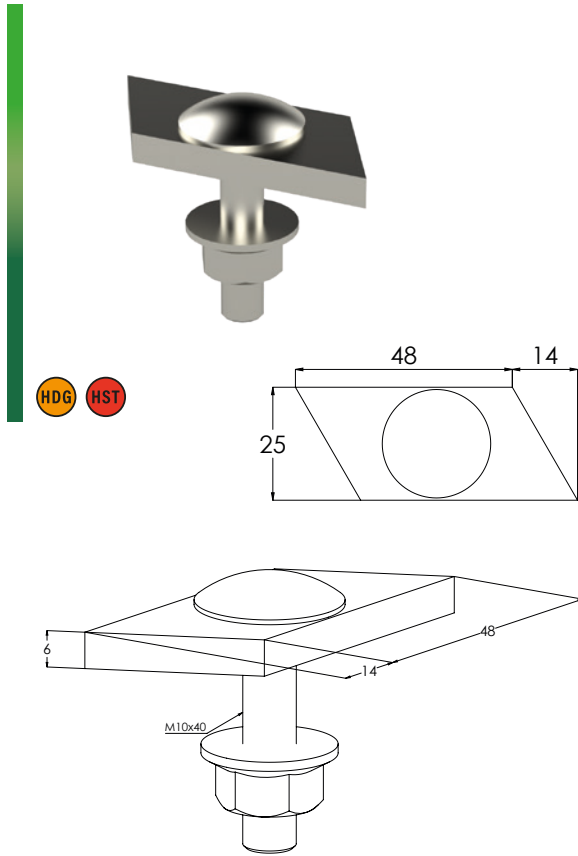
Wall support VK/VKF can be attached to the wall with a through bolt. The cable ladder is attached to wall support VK/VKF with bracket KK.



Supporting the 200–400 mm wide KSF80 ladders from the upper tube is possible with the VKF wall bracket.

# Sliding nut SMT

Sliding nuts SMT are used to fasten VK-type wall supports to mounting rails AS, ASR, ASR-L and ASR-P as well as to ceiling supports HK1, HK2, TP2, TP2-L and TP2-P. Using SMT nuts allow smooth adjustment of the height of supports and setting the cableways straight.

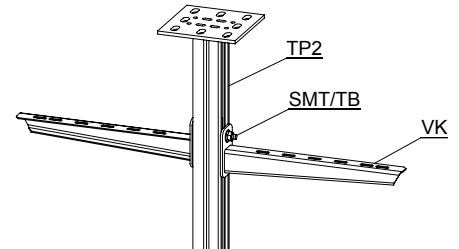
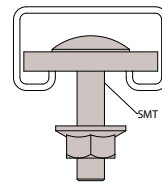


SRNO	PRODUCT	WGT.	LOADING	PACKAGE
	x = stock product	kg / pc	kg / pc	
1449684	x SMT HDG	0.096	800	10 PCE
HDG	HDG or corresponding corrosion protection : C1-C4			

Product includes screw set: 1449113 RS SMT HDG (1 PCE)

SRNO	PRODUCT	WGT.	LOADING	PACKAGE
	x = stock product	kg / pc	kg / pc	
1430422	x HST SMT	0.098	800	10 PCE
HST	Manufactured of stainless steel in accordance with standard EN 10088 : C1-CX			

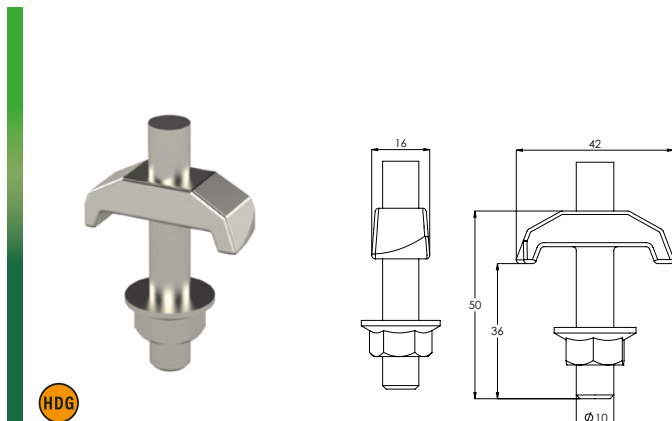
Product includes screw set: 1430433 HST RS SMT (1 PCE)



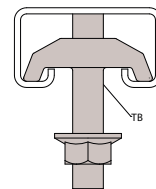
Sliding nut SMT is slotted in the groove of a mounting rail or ceiling support, where it is locked in place by twisting its base inside the rail.

# Sliding nut TB

Sliding nuts TB are used to fasten VK-type wall supports for mounting rails AS, ASR, ASR-L and ASR-P as well as to ceiling supports HK1, HK2, TP2, TP2-L and TP2-P. Rubber pads keep TB nuts at place inside of rails and make fixing of wall supports easier.



SRNO	PRODUCT	WGT.	LOADING	PACKAGE
	x = stock product	kg / pc	max. kg	
1449649	x TB HDG	0.065	800	10 PCE
HDG	Manufactured of hot-dip galvanized steel in accordance with standard EN 10346			

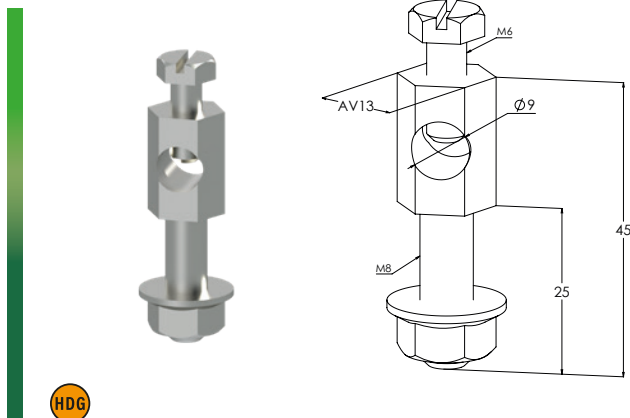


Sliding nut TB is slotted in the groove of a mounting rail or ceiling support, where it is locked in place by twisting its base inside the rail



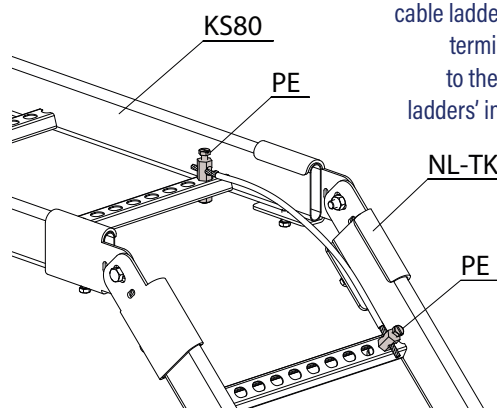
## Earthing terminal PE

Earthing terminals PE are used to ground cable ladders, lighting support rails, cable trays and wire mesh trays at places where it is especially needed. PE terminal has  $\varnothing 9$  mm hole for fixing the earthing wire. Mounting can be done easily into cable ladders' rungs or cable trays' perforation. Product set includes bolt and nut.



HDG

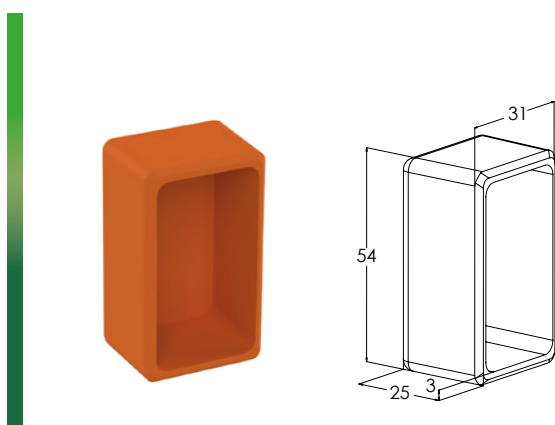
SRNO	PRODUCT x = stock product	WGT. kg / pc	PACKAGE
1449799	x PE HDG	0.033	10 PCE
HDG HDG or corresponding corrosion protection : CI-C4			



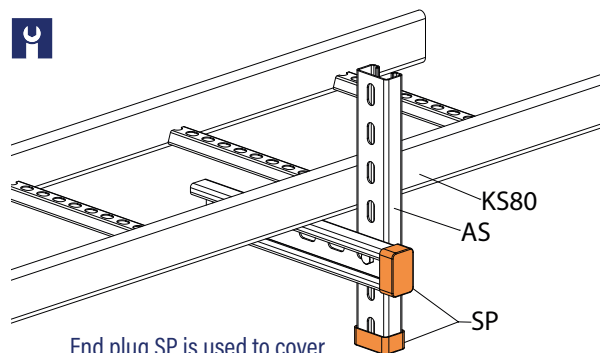
The earthing terminal is used to connect an earthing cable to the cable ladder's joints. Earthing terminal PE is attached to the holes of the cable ladders' intermediate cleats.

## End plug SP

End plugs SP are used to cover ends of AS mounting rails and ceiling brackets HK1 and HK2. Orange colour plugs are visible in dim light that is important for security reason.



SRNO	PRODUCT x = stock product	WGT. kg / pc	PACKAGE
1449672	x SP	0.01	10 PCE



End plug SP is used to cover the ends of mounting rail AS.



Meka has 70 years of experience in the construction of demanding metal structures design, fabrication and installation.

We are now applying our experience and expertise to the development and manufacture of mounting systems for solar energy production.

**MEKA PRO OY | KONETIE 25, 90620 OULU | 020 745 0800 | WWW.MEKA.EU**