

# FIRE-RESISTANT CABLE SUPPORT SYSTEMS



# FIRE RESISTANCE

Version 5.0 | Published 29.09.2025

Meka Pro tests the fire resistance of its products to ensure high-quality and, most importantly, safe cable management systems and installations. Meka Pro does not suffice with simulation calculations and partial testing. Instead, Meka Pro's products are extensively and regularly tested by using different installation and assembly methods and current-conducting cables in independent fire test laboratories. Meka Pro conducts all of its fire tests (with regard to the temperature and test methodology) according to the requirements of the following standards\*:

- ISO 834-1
- EN 1363-1
- DIN 4102-12

The general principles that are required by these standards can be used in different testing methods, but more specific details will vary according to the element being tested. One illustrative example of the standard requirements is the temperature curve depicted in the chart. Standards like EN 1363-1 (Fire resistance tests - Elements of building construction) require that the ambient temperature at 30 minutes is 821 degrees C higher and at 90 minutes is 986 degrees C higher than at the starting point of the test.

Meka Pro's cable management systems undergo comprehensive testing with electricity-conducting cables connected. The fire resistance classification of a tested cable management system is determined by the endurance of the electric circuit it supports. The cable management system is considered damaged when the electric circuit is interrupted, a short circuit occurs, or the structure collapses. The time at which the circuit fails, or the system collapses, defines the fire safety class of all components and products within the system. For example, the E60 classification indicates that the product has passed a fire test in which the electric circuit remained functional for at least 60 minutes without system collapse.

It is worth noting that Meka Pro's selected fire testing methodologies comply with the EN 1363-1 standard for building material testing and are significantly more demanding than the current standards for testing fire-resistant cables.

Meka Pro's fire-rated products have passed fire tests both in terms of electrical conductivity and structural integrity, with cables both fixed and unfixed. In horizontal installations, even unfixed (free) cables have not fallen from cable ladders, cable trays, lighting tracks, or wire mesh trays during fire tests, despite the cable management systems bending due to heat exposure.

\* The test environment and methods in the fire tests performed by Meka Pro also complies with the technical report 'CLC/FprTR 50658 Cable management systems (CMS) providing support for cables with intrinsic fire resistance.

## FIRE-RESISTANT CABLE SUPPORT SYSTEMS

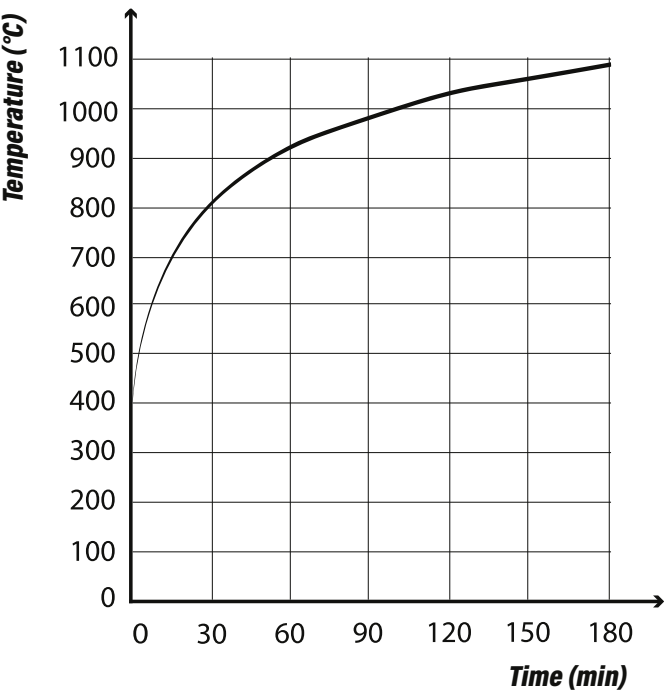
In all fire-resistant cable management system installations, the manufacturer's installation instructions must be obeyed and they must always comply with valid local and international standards and norms. Fire-resistant cable management systems shall be installed only by a competent installer. All fastenings of fire-resistant cable management system installations must be carried out with corresponding fire-rated fastening accessories.

The most commonly used fire-resistant cable management systems are cable ladders, cable trays, wire mesh trays, and MEK® lighting support rails. The manufacturer is not liable for incorrect product selection or direct and indirect damages resulting from the incorrect use and installation of the product.

In fire-resistant installations, the cables must be set on their own ladder or tray or separated from other cables by distance or protection. Protection can be implemented by using a separation plate. Fire-resistant cables are marked with the FRHF-prefix, which is short for 'Fire-Resistant Halogen-Free.'

Most fire-resistant cables can be identified by an orange or red cable sheath. The fire-resistant cables differ from normal cables used in construction through their minimized smoke generation and retainment of functionality in fire conditions.

Meka Pro's technical support will be able to assist you with any questions related to fire-safe products and installations.



The temperature curve of the test environment according to standards ISO 834-1 and EN 1363-1.



Detailed instructions on fire-resistant installation are available on Meka Pro Oy's website



[www.meka.eu](http://www.meka.eu)







# FIRE-RESISTANT CABLE LADDERS

## FIRE RATING E90

PRODUCT	SPAN LENGTH max (m)	WIDTH max (mm)	LOADING max (kg/m)
KSF80	1,5	600	20
KS80 SP2.0	1,5	600	20
KS80	1,5	600	20
KSE80	1,5	600	20
All lengths and surface treatment options up to a width of 600 mm.			

PRODUCT	SPAN LENGTH max (m)	WIDTH max (mm)	LOADING max (kg/m)
KS100	1,5	600	20
KS60	1.5	600	20
KS20	1.5	600	15
KS20 K	1.5	600	15
All lengths and surface treatment options up to a width of 600 mm.			

TYPE	PRODUCTS	
Bends	KS45, KS90, KSF90	All products and all material and surface treatment options up to a width of 600 mm. Corner pieces must be supported no further than 300 mm from both joints, or in the middle of corner, if distance to the joint is less than 300 mm. On demand, corner pieces must be supported so that the span length of the corner piece does not exceed the allowed span length of the concerned cable ladder when measured the length in the median line of the arc.
Bottom covers	POL, PPU	All products and all material and surface treatment options up to a width of 600 mm.
Brackets	KK, KKF, KK-MK, KS100 K, PSF	All products and all material and surface treatment options.
Branching sheet	AG	All products and all material and surface treatment options.
Cable clamps	CCA, CCB	All material and surface treatment options. For a fire-safe installation of a vertical ladder, cables must be secured with cable clamps at intervals no greater than 300 mm.
Ceiling brackets	PF, RTF-10, RTF-16, RTF-S, RTF-Z	All products and all material and surface treatment options. Fastening equipment that is rated for fire safety must be used with ceiling brackets.
Ceiling supports	HK1, TP1, TP2, TP2-L, TP2-P	All products and all material and surface treatment options. Ceiling supports HK1 and TP1 are allowed only with the intermediate support HK13, or the gate support TPK. Fastening equipment that is rated for fire safety must be used with ceiling supports.
Covers	KRL-J, KRL-KS, KRL-KST, KRL-KSX, KRL-KS45, KRL-KS90, PSK, SK	All products and all material and surface treatment options up to a width of 600 mm.
End bracket	ÄF	All material and surface treatment options.
Gate supports	PRT, TPK	All products and all material and surface treatment options up to a width of 600 mm. Gate supports must be attached to the ceiling with two threaded rods. TPK may also be attached to the ceiling with two TP1 ceiling supports.
Intermediate supports	HK13, MK	All products and all material and surface treatment options up to a width of 600 mm. Ceiling support TP1 is required when using the intermediate support HK13. Intermediate support MK is classified as E60.
Joints	KS100 J, SSR, SSU	All products and all material and surface treatment options.
Mounting rails	AS, AS-WALL, FP, PS	All products and all material and surface treatment options. Mounting rails must be attached to the wall. Fastening equipment that is rated for fire safety must be used with mounting rails.
Nuts	MU 6, MU 10, MU 16	All products and all material and surface treatment options. Nut MU 6 is permitted only for tip attachments, not for supports.
Screw sets	RS1, RS2, RS3, RS4, RS5, RS KSF, RS SSU, RS VK2, RS MEK J 10	All products and all material and surface treatment options.
Separation plates	AP, APJ, SR	All products and all material and surface treatment options.
Side profile support	KSF-VT	All material and surface treatment options. Side profile support KSF-VT must always be used in KSF80-systems next to supports, when wall or intermediate supports are placed under KSF80 ladders' lower tubes.
Sliding nut	SMT	All products and all material and surface treatment options.
T and X-pieces	KST, KSX, VF	All products and all material and surface treatment options up to a width of 600 mm. T and X-pieces must be supported no further than 300 mm from both joints, or in the middle of corner, if distance to the joint is less than 300 mm. On demand, T and X-pieces must be supported so that the span length of the product does not exceed the allowed span length of the concerned cable ladder when measured the length in the median line of the arc.
Threaded rods	GT-6, GT-10, GT-16	All products and all material and surface treatment options. Threaded rod GT-6 is permitted only for tip attachments, not for supports. Fire-rated fastening equipment is required when using threaded rods.
Wall brackets	VK2, VK3	All products and all material and surface treatment options. In addition of wall support VK2 can be used to hold up corner, T and X-piece. Wall bracket VK2 is not allowed to be used as a ceiling support. Wall bracket VK3 is not allowed to be used without floor mounting.
Wall supports	VK, VKF, VKZ, VKZ-N	All products and all material and surface treatment options. Maximum allowed widths without tip-support are: VKF 600 mm and VK 500 mm. With a tip-support 100 mm wider wall support is permitted. VKZ and VKZ-N must always be supported with a threaded rod from the tip of the support to the ceiling. VK and VKF may be attached directly to the wall using fire-rated fastening equipment, without requiring the tip to be attached. When the support is attached from the tip, the support must be wider than the cable ladder.



# EXAMPLE INSTALLATIONS

## FIRE RATING E90

### INSTALLATION OF A CORNER E90

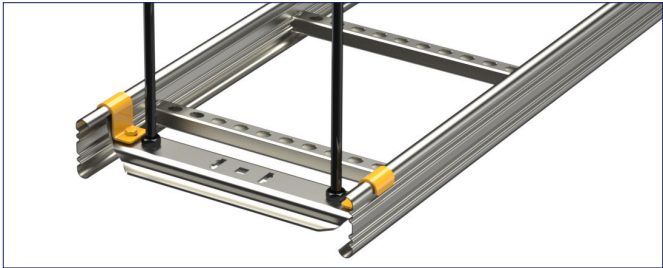


Corner piece must be supported no further than 300 mm from both joints, or in the middle of corner, if distance to the joint is less than 300 mm.

On demand, corner piece must be supported so that the span length of the corner piece does not exceed the allowed span length of the concerned cable ladder when measured the length in the median line of the arc.

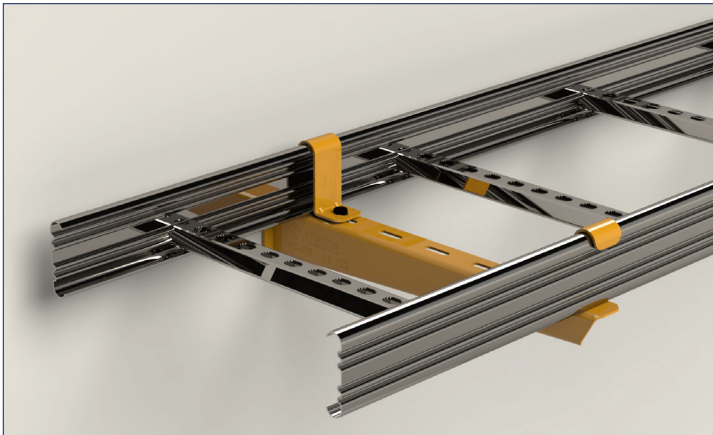
Corner piece can be supported by fire rated brackets and supports, or by using wall bracket VK2 in both side of the product. One VK2 is not enough.

### GATE SUPPORT E60/E90



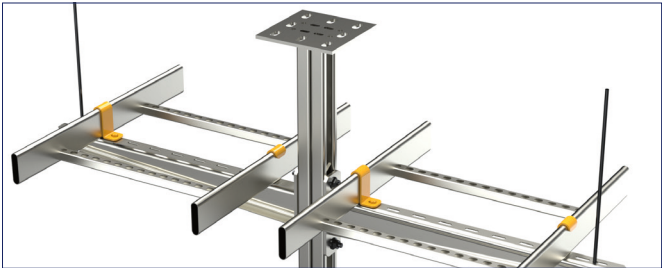
Gate supports TPK and PRT are E90 compliant, and gate support MK is E60 compliant. In an E60 compliant gate support installation, gate support MK must be attached to the ceiling with two threaded rods. Gate support MK is attached to the cable ladder with bracket KK-MK.

### WALL SUPPORT E90



In an E90 fire rating compliant installation, VK and VKF may be attached to the wall directly with fire-rated fastening equipment, without the need for the tip to be attached.

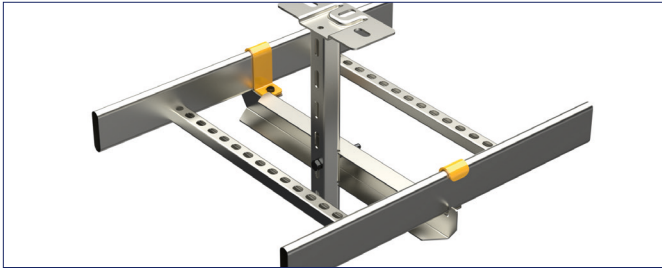
### TIP ATTACHMENT E90



Tip attachment is required to achieve the fire rating, if wall support VK or VKF is attached with a sliding nut SMT to a mounting rail AS. In this case, a support that is wider than the cable ladder is required in order to attach the M6 threaded rod to the outermost hole.

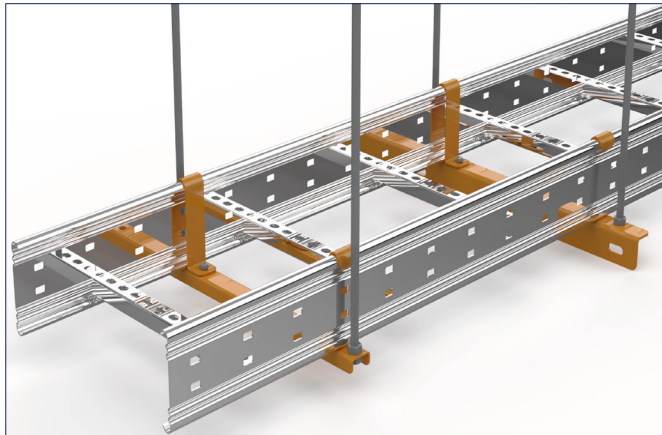
The tip attachment is not required to achieve the fire rating, if wall support VK or VKF are attached together through a ceiling support TP2 with a bolt.

### INTERMEDIATE SUPPORT E90



In an E90 compliant intermediate support installation, ceiling support TP1 is attached to intermediate support HK13 with screw set RS3. The cable ladder is attached to intermediate support HK13 with bracket KK.

### GATE SUPPORTS E90



Gate supports PRT and TPK are used to create E90 compliant gate supports with two threaded rods. Threaded rod GT-10 is attached to the intermediate support with two MU M10 nuts.

# EXAMPLE INSTALLATIONS

## FIRE RATING E90

### INSTALLATION OF A VERTICAL LADDER E90

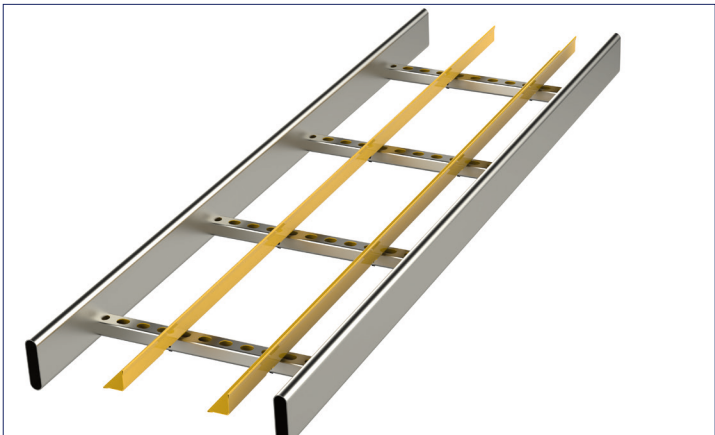


In an E60 compliant vertical ladder installation, the cable ladder is attached to the wall with wall bracket VK2 or VK3. In an E90 compliant vertical ladder installation, the cable ladder is attached to the wall with wall bracket VK2 or VK3, and to the floor with end brackets AF.

The wall brackets are installed so, that they are attached to the cable ladder cleat underneath. Cables must be attached to the transverse cleat with cable clamp CCA at intervals no greater than 300 mm. Cable clamps must be protected from fire at intervals no greater than 3.5 metre, unless otherwise instructed by the authorities. The protection of the cable clamps can be done, for example, within the building's firestops or by building a firestop around the cable ladder, cables and clamps from firestop material. The firestop must be made in accordance with a national standards, national regulations or industry-specific standards.

Vertical installation:  
Maximum allowed support interval (VK2 and VK3): 1.5m  
Maximum allowed load per metre (KS20 K): 10kg  
Maximum allowed load per metre (KS20): 15kg  
Maximum allowed load per metre (KS60): 17.5kg  
Maximum allowed load per metre (KS80): 20kg

### CABLE SEPARATION E90



To separate fire-resistant cables from other cables, separation plates AP are suitable. Separation plates AP are attached to the cable ladder's rungs with screw sets RS 1 or RS 5. Couplers APJ are used to continue separation plates AP.

### CABLE SEPARATION E90



To separate fire-resistant cables from other cables, low-current channels SR are suitable. Low-current channels SR are attached to the rungs of the cable ladder with bolt sets RS 1 or RS 5.

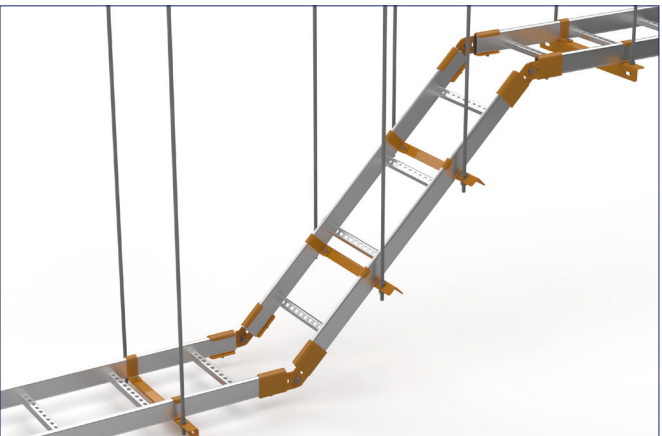
### T-PIECE INSTALLATION E90



T- and X-pieces must be supported no further than 300 mm from both joints, or in the middle of corner, if distance to the joint is less than 300 mm.

On demand, T- and X-pieces must be supported so that the span length of the product does not exceed the allowed span length of the concerned cable ladder when measured the length in the median line of the arc. T- and X-pieces can be supported by fire rated brackets and supports, or by using wall bracket VK2 in both side of the product. One VK2 is not enough.

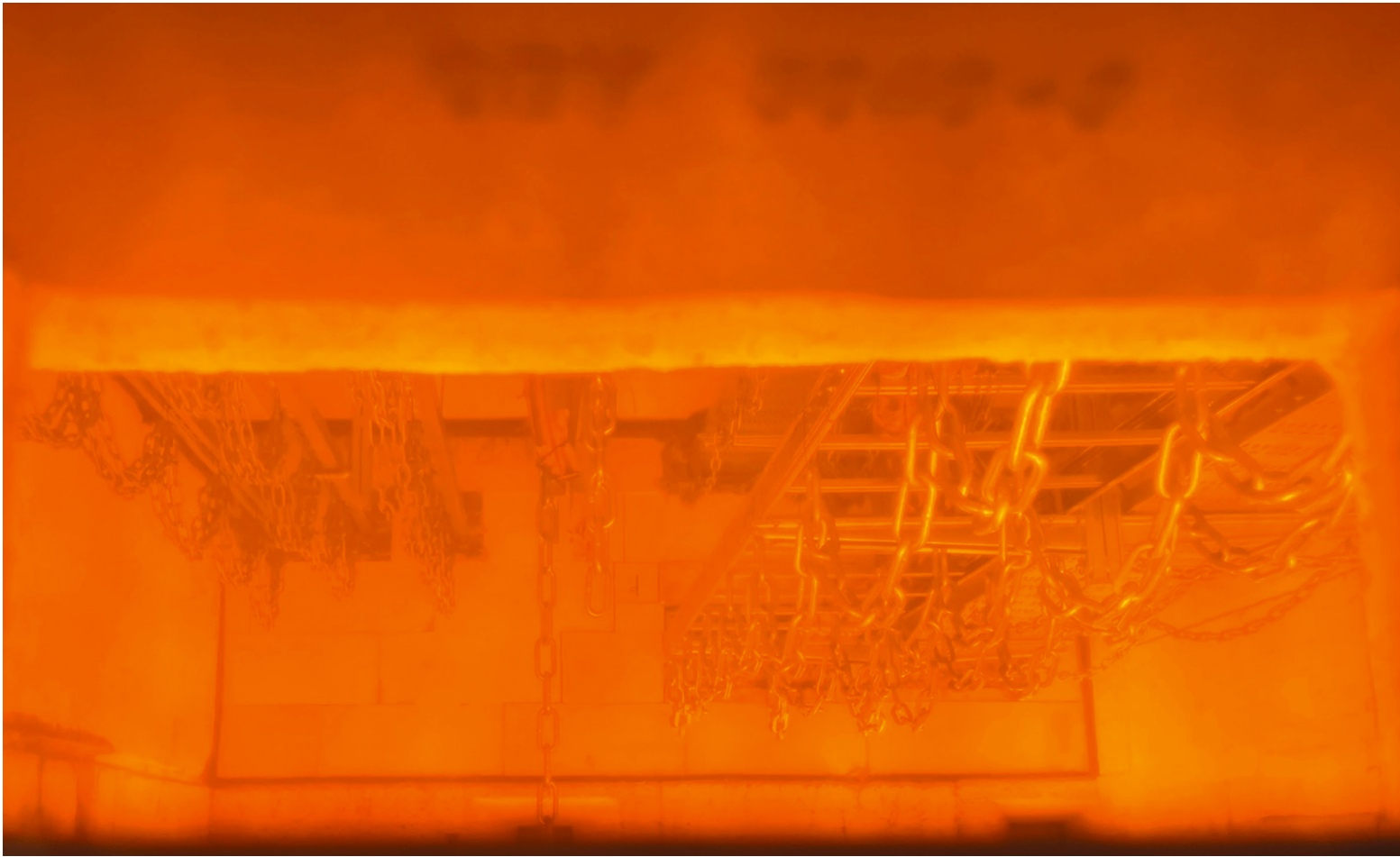
### INSTALLATION OF A VERTICAL CORNER E90



Vertical corner piece must be supported no further than 300 mm from both joints, or in the middle of corner, if distance to the joint is less than 300 mm.

On demand, corner piece must be supported so that the span length of the corner piece does not exceed the allowed span length of the concerned cable ladder.





# FIRE-RESISTANT KR CABLE TRAYS

## FIRE RATING E90

PRODUCT	SPAN LENGTH max (m)	WIDTH max (mm)	LOADING max (kg/m)
KRA	1.5	500	10
KRB	1,5	500	10
All lengths and surface treatment options up to a width of 500 mm.			

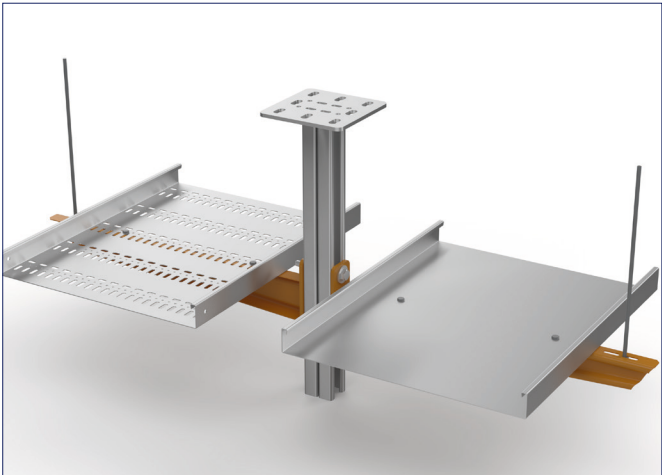
TYPE	PRODUCTS	
Bends	RS90	All material and surface treatment options up to a width of 500 mm. Corner pieces must be supported at no further than 300 mm from both joints.
Bracket	PSF	All material and surface treatment options.
Ceiling brackets	RTF-10, RTF-16, RTF-S, RTF-Z	All products and all material and surface treatment options. Fastening equipment that is rated for fire safety must be used with ceiling brackets.
Ceiling supports	HK1, TP1, TP2, TP2-L, TP2-P	All products and all material and surface treatment options. Ceiling supports HK1 and TP1 are allowed only with the gate support TPK. Fastening equipment that is rated for fire safety must be used with ceiling supports.
Covers	KRL, KRL-RS90, KRL-RT	All products and all material and surface treatment options up to a width of 500 mm.
End plate	P-KRA	All material and surface treatment options up to a width of 500 mm.
Gate supports	PRT, TPK	All products and all material and surface treatment options up to a width of 500 mm. Gate supports must be attached to the ceiling with two threaded rods.
Intermediate supports	RMK	All surface treatment options in widths 200-500 mm. RMK must be attached to the ceiling with two threaded rods.
Joints	RSS	All material and surface treatment options up to a width of 500 mm.
Mounting rails	AS, AS-WALL, FP, PS	All products and all material and surface treatment options. Mounting rails AS and AS WALL must be attached to the wall. Mounting rails FP and PS can be used for support. Fire-rated fastening equipment must be used with mounting rails.
Nuts	MU 6, MU 10, MU 16	All products and all material and surface treatment options. Nut MU 6 is permitted only for tip attachments, not for supports.
Screw sets	RS1, RS2, RS3, RS4, RS5, RS KSF, RS SSU, RS VK2, RS MEK J 10	All products and all material and surface treatment options.
Separation plates	AP, APT, APJ, SR	All products and all material and surface treatment options.
Sliding nut	SMT	All material and surface treatment options.
T pieces	RT	All material and surface treatment options up to a width of 500 mm. T-pieces must be supported at no further than 300 mm from each joint.
Threaded rods	GT-6, GT-10, GT-16	All products and all material and surface treatment options. Threaded rod GT-6 is permitted only for tip attachments, not for supports. Fire-rated fastening equipment is required when using threaded rods.
Wall supports	VK, VKF, VKZ, VKZ-N	All products and all material and surface treatment options. Maximum allowed widths without tip-support are: VKF 600 mm and VK 500 mm. With a tip-support 100 mm wider wall support is permitted. VKZ and VKZ-N must always be supported with a threaded rod from the tip of the support to the ceiling. VK and VKF may be attached directly to the wall using fire-rated fastening equipment, without requiring the tip to be attached. When the support is attached from the tip, the support must be wider than the cable tray.



# EXAMPLE INSTALLATIONS

## FIRE RATING E90

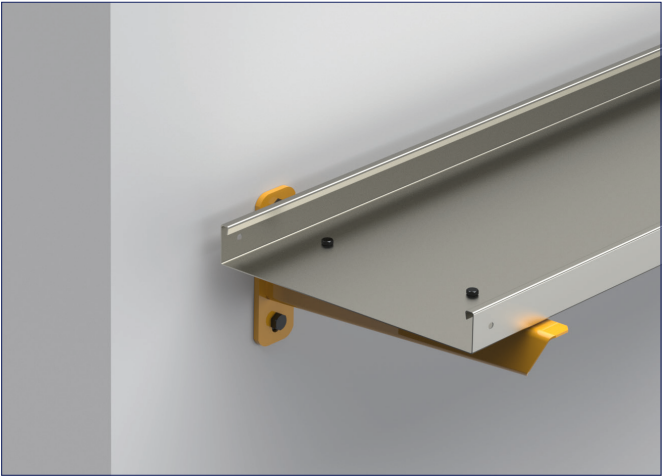
### TIP ATTACHMENT E90



Tip attachment is required to achieve the E90 fire rating, if wall support VK or VKF is attached with a sliding nut SMT to a mounting rail AS. In this case, a support that is wider than the cable tray is required in order to attach the M6 threaded rod to the outermost hole.

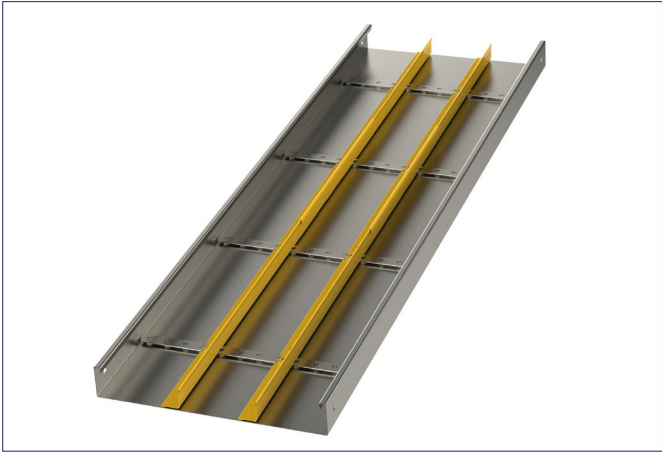
The tip attachment is not required to achieve the E90 fire rating, if wall support VK or VKF are attached together through a ceiling support TP2 with a bolt.

### WALL SUPPORT E90



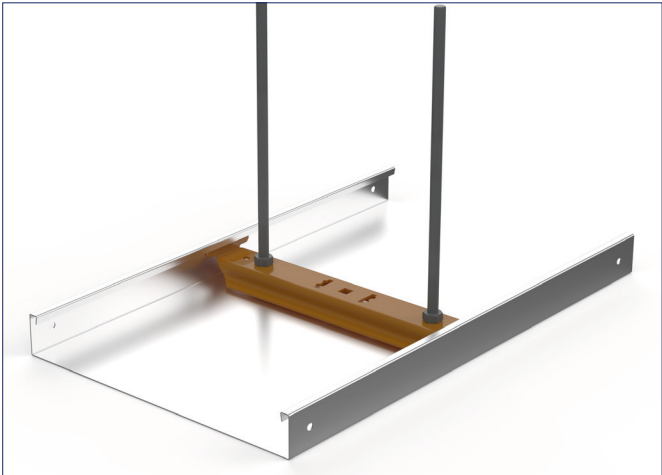
In an E90 fire rating compliant installation, VK and VKF may be attached to the wall directly with fire-rated fastening equipment, without the need for the tip to be attached.

### CABLE SEPARATION E90



To separate fire-resistant cables from other cables, separation plates AP are suitable. Separation plates AP are attached to the supports APT with screw sets RS 1 or RS 5. Couplers APJ are used to continue separation plates AP.

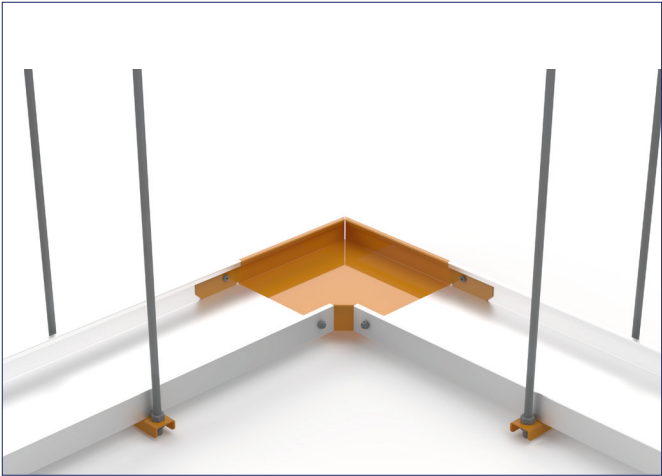
### GATE SUPPORT E90



In E90 fire rating compliant gate supports, intermediate support RMK must be installed with two threaded rods. Threaded rod GT-10 is attached to the intermediate support with two MU M10 nuts.

RMK-40-100 and RMK-60-100 can be used only in an E60 compliant installations by attaching them by one threaded rod GT-10. In that case the maximum support interval is 1.25 m and the maximum loading is 5 kg/m.

### INSTALLATION OF A CORNER E90



In an E90 fire rating compliant corner installation, corner piece RS90 must be supported at no further than 300 mm from both joints. Support can be done with gate support PRT. Gate support PRT must be attached to the ceiling with two threaded rods.

FIRE-RESISTANT WIRE MESH TRAYS

FIRE RATING E60

PRODUCT	SPAN LENGTH max (m)	WIDTH max (mm)	LOADING max (kg/m)
WMT	1.25	200	10
All lengths and surface treatment options up to a width of 200mm. Edge heights 50, 100 and 150 mm.			

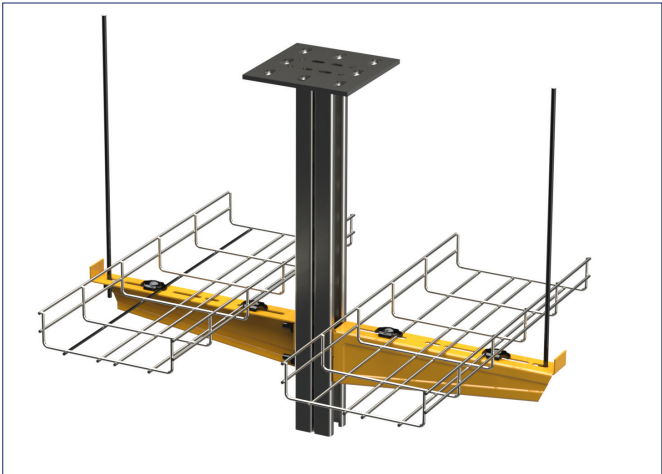
TYPE	PRODUCTS	
Bends	WMT CL	All material and surface treatment options. Corner installations are made as shown in the example with connector set WMT CL. Corners must be supported in the middle as well as no further than 300mm from both joints.
Cable clamps	CCB	All material and surface treatment options.
Ceiling brackets	RTF-10, RTF-16, RTF-S, RTF-Z	All products and all material and surface treatment options. Fire-rated fastening equipment must be used with ceiling brackets.
Ceiling supports	TP1, TP2, TP2-L, TP2-P	All products and all material and surface treatment options. Fastening equipment size M10 that is rated for fire safety must be used with ceiling supports.
Connector and connection plates	WMT CL1, WMT UC1, WMT UC1D	All products and all material and surface treatment options.
Gate supports	PRT, TPK	All products and all material and surface treatment options. Gate supports must be attached to the ceiling with two threaded rods.
Intermediate support	WMT UC1	All material and surface treatment options. Intermediate supports are done as shown in the example with connection plate WMT UC1, threaded rod GT-6 and MU M6 nuts.
Joints	WMT CL, WMT SC1, WMT SC2, WMT UC	All products and all material and surface treatment options.
Mounting rails	AS, AS-WALL, FP	All products and all material and surface treatment options. Mounting rails AS and AS WALL must be attached to the wall. Fire-rated fastening equipment must be used with mounting rails.
Nuts	MU 6, MU 10, MU 16	All products and all material and surface treatment options. Nut MU 6 is permitted only for tip attachments and for E60-classified intermediate support with WMT UC1, as shown in examples.
Screw sets	RS1, RS2, RS3, RS4, RS5, RS KSF, RS SSU, RS VK2, RS MEK J 10	All products and all material and surface treatment options.
Separation plates	AP, APJ, SR	All products and all material and surface treatment options.
Sliding nut	SMT	All material and surface treatment options.
Threaded rods	GT-6, GT-10, GT-16	All products and all material and surface treatment options. Threaded rod GT-6 is permitted only for tip attachments and for E60-classified intermediate support with WMT UC1, as shown in the examples. GT-6 is not permitted with other support types. Fire-rated fastening equipment is required when using threaded rods.
Wall supports	VK, VKF, VKZ, VKZ-N	All products and all material and surface treatment options. Maximum allowed widths without tip-support are: VKF 600 mm and VK 500 mm. With a tip-support 100 mm wider wall support is permitted. VKZ and VKZ-N must always be supported with a threaded rod from the tip of the support to the ceiling. VK and VKF may be attached directly to the wall using fire-rated fastening equipment, without requiring the tip to be attached. When the support is attached from the tip, the support must be wider than the wire mesh tray.



# EXAMPLE INSTALLATIONS

## FIRE RATING E60

### TIP ATTACHMENT E60



The tip attachment is required to achieve the E60 fire rating, if wall support VK, VKF, VKZ or VKZ-N is attached with a sliding nut SMT to mounting rail AS. In this case, a support that is wider than the wire mesh tray is required in order to attach the M6 threaded rod to the outermost hole.

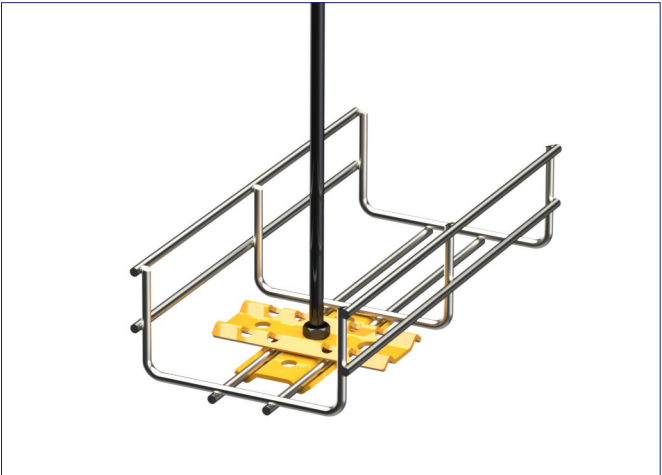
The tip attachment is not required to achieve the E60 fire rating, if VK or VKF are attached together through a ceiling support TP2 with a bolt.

### GATE SUPPORT E60



Gate support PRT is used to create E60 compliant gate supports with two threaded rods. Threaded rod GT-10 is attached to the intermediate support with two MU M10 nuts.

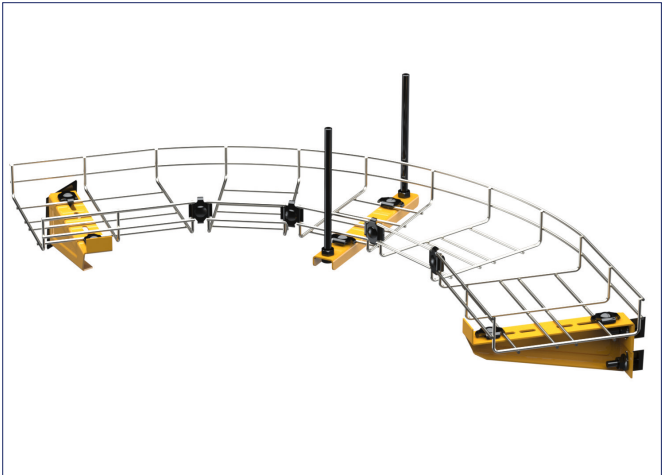
### INTERMEDIATE SUPPORT E60



Intermediate supports that are compliant with the E60 fire rating are done as shown in the example with connection plate WMT UC1, threaded rod GT-6 and nut MU M6.

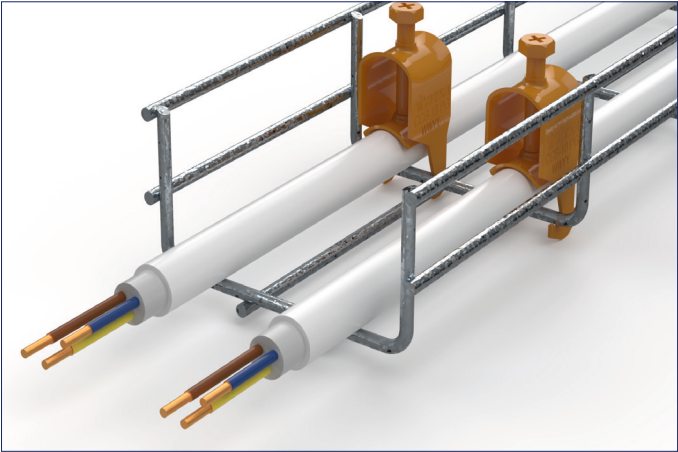
Intermediate supports that are compliant with the E60 fire rating are made with a wire mesh tray no wider than 100 mm.

### INSTALLATION OF A CORNER E60



Fire rating E60 compliant 90° angles are achieved by cutting the wire mesh tray as shown in the example and joining the edges together with connector set WMT CL. The corner must be supported in the middle as well as no further than 300 mm on both sides of the corner.

### CABLE FIXING E60



Cables can be attached to the wire mesh tray WMT using the cable clamps CCB.

FIRE-RESISTANT LIGHTING SUPPORT RAILS

FIRE RATING E60

PRODUCT	SPAN LENGTH max (m)	WIDTH max (mm)	LOADING max (kg/m)
MEK 110	1.25	110	5
MEK 110 K	1.25	110	5
MEK 70	1.25	70	5
MEK 70 K	1.25	70	5
MEK 70 S	1,25	70	5
All lengths and surface treatment options.			

TYPE	PRODUCTS	
Ceiling brackets	RTF-10, RTF-16, RTF-S, RTF-Z	All products and all material and surface treatment options. Fire-rated fastening equipment must be used with ceiling brackets.
Corner piece	MEK KR, MEK TR, MEK XR	All products and all surface treatment options. Corner piece is not allowed to be used as a support. Corners must be supported at no further than 300 mm from both corner pieces. Corner piece MEK KR, MEK TR or MEK XR is not required for E60 fire rating compliance in corner installation, but it can be used in a fire-resistant installation.
Intermediate supports	MEK RK	All material and surface treatment options. Fire-rated fastening equipment must be used with intermediate supports.
Joints	MEK J	All material and surface treatment options.
Nuts	MU 10, MU 16	All products and all material and surface treatment options.
Screw sets	RS1, RS2, RS3, RS4, RS5, RS KSF, RS SSU, RS VK2, RS MEK J 10	All products and all material and surface treatment options.
Threaded rods	GT-6, GT-10, GT-16	All products and all material and surface treatment options. Threaded rod GT-6 is permitted only for tip attachments, not for supports. Fire-rated fastening equipment is required when using threaded rods.
Wall support	MEK SK-70	For MEK 70 only. All material and surface treatment options.



# EXAMPLE INSTALLATIONS

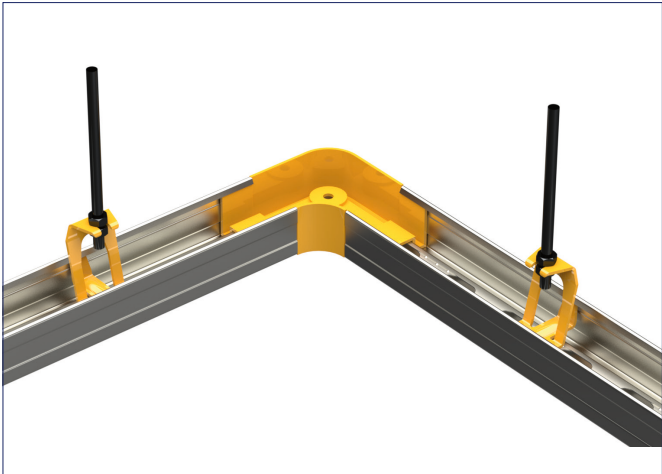
## FIRE RATING E60

### INTERMEDIATE SUPPORT E60



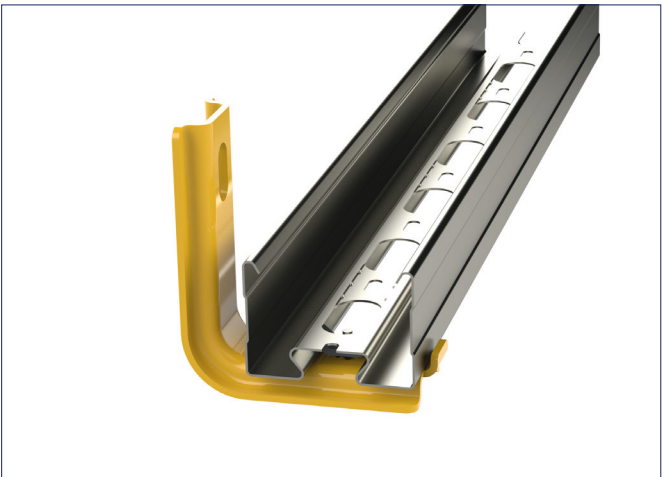
MEK lighting support rails are suspended in an E60 fire rating compliant manner with intermediate support MEK RK. The intermediate support is suspended from the ceiling with a threaded rod.

### CORNER E60



In an E60 fire rating compliant corner and junction installations, the corner, T- and X-pieces must be supported at no further than 300 mm from both joints. Corner piece MEK KR, or junction pieces MEK TR and XR are not required for E60 fire rating compliance in the installation, but they can be used in a fire-resistant installation.

### WALL SUPPORT E60



In an E60 fire rating compliant installation, MEK SK-70 is attached to the wall directly with fire-rated fastening equipment.







PRODUCT NAME		CODE	🔥
AG PG	Branching sheet	1449690	E90
AG XPG	Branching sheet	1433443	E90
AP-40 L=1750 PG	Separation plate	1449718	E90
AP-40 L=2750 HDG	Separation plate	1449719	E90
AP-40 L=2750 M	Separation plate	1461660	E90
AP-40 L=2750 PG	Separation plate	1449710	E90
AP-40 L=2750 XPG	Separation plate	1433442	E90
AP-60 L=2000 M	Separation plate	1432740	E90
AP-60 L=2000 PG	Separation plate	1432737	E90
AP-60 L=2000 XPG	Separation plate	1478034	E90
APJ-40 M	Joint	1431681	E90
APJ-40 PG	Joint	1431680	E90
APJ-40 XPG	Joint	1433466	E90
APJ-60 M	Joint	1432746	E90
APJ-60 PG	Joint	1432743	E90
APJ-60 XPG	Joint	1433473	E90
APT-100 PG	Separation plate support	1431671	E90
APT-200 PG	Separation plate support	1431672	E90
APT-300 PG	Separation plate support	1431673	E90
APT-400 PG	Separation plate support	1431674	E90
APT-500 PG	Separation plate support	1431675	E90
APT-600 PG	Separation plate support	1431676	E90
AS L=1980 HDG	Mounting rail	1449691	E90
AS L=3015 HDG	Mounting rail	1449661	E90
AS L=6030 HDG	Mounting rail	1449648	E90
AS WALL L=1980 HDG	Wall mounting rail	1449208	E90
ASR L=6030 HDG	Mounting rail	1449660	E90
ASR-L L=6030 HDG	Mounting rail	1449136	E90
ASR-P L=6030 HDG	Mounting rail	1449137	E90
CCA-12 PG	Cable clamp	1342000	E90
CCA-12 XPG	Cable clamp	1342052	E90
CCA-14 PG	Cable clamp	1342001	E90
CCA-14 XPG	Cable clamp	1342053	E90
CCA-18 PG	Cable clamp	1342002	E90
CCA-18 XPG	Cable clamp	1342054	E90
CCA-22 PG	Cable clamp	1342003	E90
CCA-22 XPG	Cable clamp	1342055	E90
CCA-26 PG	Cable clamp	1342004	E90
CCA-26 XPG	Cable clamp	1342056	E90
CCA-30 PG	Cable clamp	1342005	E90
CCA-30 XPG	Cable clamp	1342057	E90
CCA-34 PG	Cable clamp	1342006	E90
CCA-34 XPG	Cable clamp	1342058	E90
CCA-40 PG	Cable clamp	1342007	E90
CCA-40 XPG	Cable clamp	1342059	E90
CCA-46 PG	Cable clamp	1342008	E90
CCA-46 XPG	Cable clamp	1342060	E90
CCA-52 PG	Cable clamp	1342009	E90
CCA-52 XPG	Cable clamp	1342061	E90
CCA-60 PG	Cable clamp	1342010	E90
CCA-60 XPG	Cable clamp	1342062	E90
CCA-82 PG	Cable clamp	1342011	E90
CCA-82 XPG	Cable clamp	1342063	E90
CCB-12 PG	Cable clamp	1342020	E60

PRODUCT NAME		CODE	🔥
CCB-14 PG	Cable clamp	1342021	E60
CCB-18 PG	Cable clamp	1342022	E60
CCB-22 PG	Cable clamp	1342023	E60
CCB-26 PG	Cable clamp	1342024	E60
CCB-30 PG	Cable clamp	1342025	E60
CCB-34 PG	Cable clamp	1342026	E60
CCB-40 PG	Cable clamp	1342027	E60
CCB-46 PG	Cable clamp	1342028	E60
CCB-52 PG	Cable clamp	1342029	E60
CCB-60 PG	Cable clamp	1342030	E60
FP L=1980 HDG	Mounting rail	1449620	E90
FP L=1980 PG	Mounting rail	1449619	E90
GT-10 L=2000 EG	Threaded rod	1449650	E90
GT-10 L=2000 HDG	Threaded rod	1449160	E90
GT-16 L=2000 EG	Threaded rod	1449651	E90
GT-16 L=2000 HDG	Threaded rod	1449161	E90
GT-6 L=1000 EG	Threaded rod M6 L=1m	1459420	E90
HK1-1000 HDG	Ceiling support	1449500	E90
HK1-300 HDG	Ceiling support	1449497	E90
HK1-500 HDG	Ceiling support	1449498	E90
HK1-750 HDG	Ceiling support	1449499	E90
HK13-150 HDG	Intermediate support	1449641	E90
HK13-150 XPG	Intermediate support	1433062	E90
HK13-210 HDG	Intermediate support	1449642	E90
HK13-210 PG	Intermediate support	1449472	E90
HK13-210 XPG	Intermediate support	1433063	E90
HK13-216 HDG	Intermediate support	1449692	E90
HK13-216 PG	Intermediate support	1449462	E90
HK13-310 HDG	Intermediate support	1449643	E90
HK13-310 PG	Intermediate support	1449473	E90
HK13-310 XPG	Intermediate support	1433064	E90
HK13-316 HDG	Intermediate support	1449693	E90
HK13-316 PG	Intermediate support	1449463	E90
HK13-410 HDG	Intermediate support	1449644	E90
HK13-410 PG	Intermediate support	1449474	E90
HK13-410 XPG	Intermediate support	1433065	E90
HK13-416 HDG	Intermediate support	1449694	E90
HK13-416 PG	Intermediate support	1449464	E90
HK13-510 HDG	Intermediate support	1449645	E90
HK13-510 PG	Intermediate support	1449475	E90
HK13-510 XPG	Intermediate support	1433066	E90
HK13-516 HDG	Intermediate support	1449695	E90
HK13-516 PG	Intermediate support	1449465	E90
HK13-610 HDG	Intermediate support	1449646	E90
HK13-610 PG	Intermediate support	1449476	E90
HK13-610 XPG	Intermediate support	1433067	E90
HK13-616 HDG	Intermediate support	1449696	E90
HK13-616 PG	Intermediate support	1449466	E90
HST AP-40 L=2000	Separation plate	1430401	E90
HST AS L=6030	Mounting rail	1430410	E90
HST ASR L=6030	Mounting rail	1430411	E90
HST CCA-12	Cable clamp	1342076	E90
HST CCA-14	Cable clamp	1342077	E90
HST CCA-18	Cable clamp	1342078	E90


PRODUCT NAME		CODE	🔥
HST CCA-22	Cable clamp	1342079	E90
HST CCA-26	Cable clamp	1342080	E90
HST CCA-30	Cable clamp	1342081	E90
HST CCA-34	Cable clamp	1342082	E90
HST CCA-40	Cable clamp	1342083	E90
HST CCA-46	Cable clamp	1342084	E90
HST CCA-52	Cable clamp	1342085	E90
HST CCA-60	Cable clamp	1342086	E90
HST CCA-82	Cable clamp	1342087	E90
HST FP L=1980	Mounting rail	1430414	E90
HST GT-10 L=2000	Threaded rod	1430420	E90
HST GT-16 L=2000	Threaded rod	1430421	E90
HST HK13-216	Intermediate support	1430252	E90
HST HK13-316	Intermediate support	1430253	E90
HST HK13-416	Intermediate support	1430254	E90
HST HK13-516	Intermediate support	1430255	E90
HST HK13-616	Intermediate support	1430256	E90
HST JM M10	Extension nut	1430434	E90
HST JM M16	Extension nut	1430435	E90
HST KK	Bracket	1430300	E90
HST KKF	Bracket	1430302	E90
HST KS100 J	Joint	1478234	E90
HST KS100-200 L=6000	Cable ladder	1478214	E90
HST KS100-300 L=6000	Cable ladder	1478215	E90
HST KS100-400 L=6000	Cable ladder	1478216	E90
HST KS100-500 L=6000	Cable ladder	1478217	E90
HST KS100-600 L=6000	Cable ladder	1478218	E90
HST KS20-200 L=6000	Cable ladder	1430012	E90
HST KS20-300 L=6000	Cable ladder	1430013	E90
HST KS20-400 L=6000	Cable ladder	1430014	E90
HST KS20-500 L=6000	Cable ladder	1430015	E90
HST KS20-600 L=6000	Cable ladder	1430016	E90
HST KS80-150 L=6000	Cable ladder	1430001	E90
HST KS80-200 L=6000	Cable ladder	1430002	E90
HST KS80-300 L=6000	Cable ladder	1430003	E90
HST KS80-400 L=6000	Cable ladder	1430004	E90
HST KS80-500 L=6000	Cable ladder	1430005	E90
HST KS80-600 L=6000	Cable ladder	1430006	E90
HST KS90-150 R=300	Bend 90°	1430051	E90
HST KS90-200 R=300	Bend 90°	1430052	E90
HST KS90-300 R=300	Bend 90°	1430053	E90
HST KS90-400 R=300	Bend 90°	1430054	E90
HST KS90-500 R=300	Bend 90°	1430055	E90
HST KS90-600 R=300	Bend 90°	1430056	E90
HST KSF-VT	Side profile support	1430312	E90
HST KST-150 R=300	T-piece	1430091	E90
HST KST-200 R=300	T-piece	1430092	E90
HST KST-300 R=300	T-piece	1430093	E90
HST KST-400 R=300	T-piece	1430094	E90
HST KST-500 R=300	T-piece	1430095	E90
HST KST-600 R=300	T-piece	1430096	E90
HST MEK 70 L=6000	Lighting support rail	1430570	E60
HST MEK J-70	Joint	1430584	E60
HST MEK RK-70	Intermediate support	1430582	E60


PRODUCT NAME		CODE	🔥
HST MU M10	Nut	1430436	E90
HST MU M16	Nut	1430437	E90
HST MU M6	Nut	1430426	E90
HST RS 1	Bolt set	1430428	E90
HST RS 2	Bolt set	1430429	E90
HST RS 3	Bolt set	1430430	E90
HST RS KSF	Bolt set	1430438	E90
HST RTF-10	Ceiling bracket	1430305	E90
HST RTF-16	Ceiling bracket	1430306	E90
HST SK-150 L=1500	Cover	1430361	E90
HST SK-200 L=1500	Cover	1430362	E90
HST SK-300 L=1500	Cover	1430363	E90
HST SK-400 L=1500	Cover	1430364	E90
HST SK-500 L=1500	Cover	1430365	E90
HST SK-600 L=1500	Cover	1430366	E90
HST SMT	Sliding nut	1430422	E90
HST SR-100 L=2000	Low voltage gutter	1430403	E90
HST SR-150 L=2000	Low voltage gutter	1430404	E90
HST SR-50 L=2000	Low voltage gutter	1430402	E90
HST SSR	Joint	1430290	E90
HST SSU	Joint	1430291	E90
HST TPI-1000	Ceiling support	1430193	E90
HST TPI-1500	Ceiling support	1430194	E90
HST TPI-2000	Ceiling support	1430195	E90
HST TPI-250	Ceiling support	1430190	E90
HST TPI-500	Ceiling support	1430191	E90
HST TPI-750	Ceiling support	1430192	E90
HST TP2-1000	Ceiling support	1430201	E90
HST TP2-1500	Ceiling support	1430202	E90
HST TP2-2000	Ceiling support	1430203	E90
HST TP2-3000	Ceiling support	1430204	E90
HST TP2-500	Ceiling support	1430200	E90
HST TPK-200	Gate support	1430262	E90
HST TPK-300	Gate support	1430263	E90
HST TPK-400	Gate support	1430264	E90
HST TPK-500	Gate support	1430265	E90
HST TPK-600	Gate support	1430266	E90
HST VF	T-branch bracket	1430310	E90
HST VK2	Wall bracket	1430303	E90
HST VK3	Wall bracket	1430304	E90
HST VKF-200 4KN	Wall support	1430172	E90
HST VKF-300 4KN	Wall support	1430173	E90
HST VKF-400 4KN	Wall support	1430174	E90
HST VKF-500 4KN	Wall support	1430175	E90
HST VKF-600 4KN	Wall support	1430176	E90
HST VKF-700 4KN	Wall support	1430177	E90
HST ÄF	End bracket	1430313	E90
JM M10 EG	Extension nut	1449704	E90
JM M10 HDG	Extension nut	1431748	E90
JM M16 EG	Extension nut	1449705	E90
JM M16 HDG	Extension nut	1431749	E90
JM M6 EG	Extension nut for threaded rod M6	1459425	E90
KK HDG	Bracket	1449676	E90


PRODUCT NAME		CODE	🔥
KK PG	Bracket	1449486	E90
KK XPG	Bracket	1433055	E90
KK-MK HDG	Bracket	1433139	E60
KK-MK PG	Bracket	1449249	E60
KK-MK XPG	Bracket	1433056	E90
KKF HDG	Bracket	1449678	E90
KRA-40-100 L=3000 M	Cable tray	1431231	E90
KRA-40-100 L=3000 PG	Cable tray	1431211	E90
KRA-40-200 L=3000 M	Cable tray	1431232	E90
KRA-40-200 L=3000 PG	Cable tray	1431212	E90
KRA-40-300 L=3000 M	Cable tray	1431233	E90
KRA-40-300 L=3000 PG	Cable tray	1431213	E90
KRA-40-400 L=3000 M	Cable tray	1431234	E90
KRA-40-400 L=3000 PG	Cable tray	1431214	E90
KRA-40-500 L=3000 M	Cable tray	1431235	E90
KRA-40-500 L=3000 PG	Cable tray	1431215	E90
KRA-60-100 L=3000 M	Cable tray	1432021	E90
KRA-60-100 L=3000 PG	Cable tray	1432001	E90
KRA-60-100 L=3000 XPG	Cable tray	1432007	E90
KRA-60-200 L=3000 M	Cable tray	1432022	E90
KRA-60-200 L=3000 PG	Cable tray	1432002	E90
KRA-60-200 L=3000 XPG	Cable tray	1432008	E90
KRA-60-300 L=3000 M	Cable tray	1432023	E90
KRA-60-300 L=3000 PG	Cable tray	1432003	E90
KRA-60-300 L=3000 XPG	Cable tray	1432009	E90
KRA-60-400 L=3000 M	Cable tray	1432024	E90
KRA-60-400 L=3000 PG	Cable tray	1432004	E90
KRA-60-400 L=3000 XPG	Cable tray	1432010	E90
KRA-60-500 L=3000 M	Cable tray	1432025	E90
KRA-60-500 L=3000 PG	Cable tray	1432005	E90
KRA-60-500 L=3000 XPG	Cable tray	1432011	E90
KRB-40-100 L=2000 M	Cable tray	1431261	E90
KRB-40-100 L=2000 PG	Cable tray	1431241	E90
KRB-40-100 L=3000 M	Cable tray	1431271	E90
KRB-40-100 L=3000 PG	Cable tray	1431251	E90
KRB-40-200 L=2000 M	Cable tray	1431262	E90
KRB-40-200 L=2000 PG	Cable tray	1431242	E90
KRB-40-200 L=3000 M	Cable tray	1431272	E90
KRB-40-200 L=3000 PG	Cable tray	1431252	E90
KRB-40-300 L=2000 M	Cable tray	1431263	E90
KRB-40-300 L=2000 PG	Cable tray	1431243	E90
KRB-40-300 L=3000 M	Cable tray	1431273	E90
KRB-40-300 L=3000 PG	Cable tray	1431253	E90
KRB-40-400 L=2000 M	Cable tray	1431264	E90
KRB-40-400 L=2000 PG	Cable tray	1431244	E90
KRB-40-400 L=3000 M	Cable tray	1431274	E90
KRB-40-400 L=3000 PG	Cable tray	1431254	E90
KRB-40-500 L=2000 M	Cable tray	1431265	E90
KRB-40-500 L=2000 PG	Cable tray	1431245	E90
KRB-40-500 L=3000 M	Cable tray	1431275	E90
KRB-40-500 L=3000 PG	Cable tray	1431255	E90
KRB-60-100 L=3000 M	Cable tray	1432101	E90
KRB-60-100 L=3000 PG	Cable tray	1432081	E90


PRODUCT NAME		CODE	🔥
KRB-60-100 L=3000 XPG	Cable tray	1432088	E90
KRB-60-200 L=3000 M	Cable tray	1432102	E90
KRB-60-200 L=3000 PG	Cable tray	1432082	E90
KRB-60-200 L=3000 XPG	Cable tray	1432089	E90
KRB-60-300 L=3000 M	Cable tray	1432103	E90
KRB-60-300 L=3000 PG	Cable tray	1432083	E90
KRB-60-300 L=3000 XPG	Cable tray	1432090	E90
KRB-60-400 L=3000 M	Cable tray	1432104	E90
KRB-60-400 L=3000 PG	Cable tray	1432084	E90
KRB-60-400 L=3000 XPG	Cable tray	1432091	E90
KRB-60-500 L=3000 M	Cable tray	1432105	E90
KRB-60-500 L=3000 PG	Cable tray	1432085	E90
KRB-60-500 L=3000 XPG	Cable tray	1432092	E90
KRL-100 L=3000 M	Cover	1431831	E90
KRL-100 L=3000 PG	Cover	1431821	E90
KRL-200 L=3000 M	Cover	1431832	E90
KRL-200 L=3000 PG	Cover	1431822	E90
KRL-300 L=3000 M	Cover	1431833	E90
KRL-300 L=3000 PG	Cover	1431823	E90
KRL-400 L=3000 M	Cover	1431834	E90
KRL-400 L=3000 PG	Cover	1431824	E90
KRL-500 L=3000 M	Cover	1431835	E90
KRL-500 L=3000 PG	Cover	1431825	E90
KRL-J-150 PG	Joint cover	1432916	E90
KRL-J-150 XPG	Joint cover	1433457	E90
KRL-J-200 PG	Joint cover	1432852	E90
KRL-J-200 XPG	Joint cover	1433458	E90
KRL-J-300 PG	Joint cover	1432853	E90
KRL-J-300 XPG	Joint cover	1433459	E90
KRL-J-400 PG	Joint cover	1432854	E90
KRL-J-400 XPG	Joint cover	1433460	E90
KRL-J-500 PG	Joint cover	1432855	E90
KRL-J-500 XPG	Joint cover	1433461	E90
KRL-J-600 PG	Joint cover	1432856	E90
KRL-J-600 XPG	Joint cover	1433462	E90
KRL-KS-150 L=3000 PG	Cover	1432898	E90
KRL-KS-150 L=3000 XPG	Cover	1433311	E90
KRL-KS-200 L=3000 PG	Cover	1432847	E90
KRL-KS-200 L=3000 XPG	Cover	1433312	E90
KRL-KS-300 L=3000 PG	Cover	1432848	E90
KRL-KS-300 L=3000 XPG	Cover	1433313	E90
KRL-KS-400 L=3000 PG	Cover	1432849	E90
KRL-KS-400 L=3000 XPG	Cover	1433314	E90
KRL-KS-500 L=3000 PG	Cover	1432850	E90
KRL-KS-500 L=3000 XPG	Cover	1433315	E90
KRL-KS-600 L=3000 PG	Cover	1432851	E90
KRL-KS-600 L=3000 XPG	Cover	1433316	E90
KRL-KS45-150 R=300 XPG	Cover	1433467	E90
KRL-KS45-200 R=300 XPG	Cover	1433468	E90
KRL-KS45-300 R=300 XPG	Cover	1433469	E90
KRL-KS45-400 R=300 XPG	Cover	1433470	E90
KRL-KS45-500 R=300 XPG	Cover	1433471	E90
KRL-KS45-600 R=300 XPG	Cover	1433472	E90
KRL-KS90-150 R=300 PG	Cover	1432801	E90



PRODUCT NAME		CODE	
KRL-KS90-150 R=300 XPG	Cover	1433326	E90
KRL-KS90-150 R=600 PG	Cover	1432901	E90
KRL-KS90-150 R=600 XPG	Cover	1433336	E90
KRL-KS90-200 R=100 PG	Cover	1432817	E90
KRL-KS90-200 R=100 XPG	Cover	1433321	E90
KRL-KS90-200 R=300 PG	Cover	1432802	E90
KRL-KS90-200 R=300 XPG	Cover	1433327	E90
KRL-KS90-200 R=600 PG	Cover	1432807	E90
KRL-KS90-200 R=600 XPG	Cover	1433337	E90
KRL-KS90-300 R=100 PG	Cover	1432818	E90
KRL-KS90-300 R=100 XPG	Cover	1433322	E90
KRL-KS90-300 R=300 PG	Cover	1432803	E90
KRL-KS90-300 R=300 XPG	Cover	1433328	E90
KRL-KS90-300 R=600 PG	Cover	1432808	E90
KRL-KS90-300 R=600 XPG	Cover	1433338	E90
KRL-KS90-400 R=100 PG	Cover	1432819	E90
KRL-KS90-400 R=100 XPG	Cover	1433323	E90
KRL-KS90-400 R=300 PG	Cover	1432804	E90
KRL-KS90-400 R=300 XPG	Cover	1433329	E90
KRL-KS90-400 R=600 PG	Cover	1432809	E90
KRL-KS90-400 R=600 XPG	Cover	1433339	E90
KRL-KS90-500 R=100 PG	Cover	1432820	E90
KRL-KS90-500 R=100 XPG	Cover	1433324	E90
KRL-KS90-500 R=300 PG	Cover	1432805	E90
KRL-KS90-500 R=300 XPG	Cover	1433330	E90
KRL-KS90-500 R=600 PG	Cover	1432810	E90
KRL-KS90-500 R=600 XPG	Cover	1433340	E90
KRL-KS90-600 R=100 PG	Cover	1432821	E90
KRL-KS90-600 R=100 XPG	Cover	1433325	E90
KRL-KS90-600 R=300 PG	Cover	1432806	E90
KRL-KS90-600 R=300 XPG	Cover	1433331	E90
KRL-KS90-600 R=600 PG	Cover	1432811	E90
KRL-KS90-600 R=600 XPG	Cover	1433341	E90
KRL-KST-150 R=1000 PG	Cover	1432908	E90
KRL-KST-150 R=1000 XPG	Cover	1433372	E90
KRL-KST-150 R=300 PG	Cover	1432906	E90
KRL-KST-150 R=300 XPG	Cover	1433352	E90
KRL-KST-150 R=600 PG	Cover	1432907	E90
KRL-KST-150 R=600 XPG	Cover	1433362	E90
KRL-KST-200 R=1000 PG	Cover	1432832	E90
KRL-KST-200 R=1000 XPG	Cover	1433373	E90
KRL-KST-200 R=300 PG	Cover	1432822	E90
KRL-KST-200 R=300 XPG	Cover	1433353	E90
KRL-KST-200 R=600 PG	Cover	1432827	E90
KRL-KST-200 R=600 XPG	Cover	1433363	E90
KRL-KST-300 R=1000 PG	Cover	1432833	E90
KRL-KST-300 R=1000 XPG	Cover	1433374	E90
KRL-KST-300 R=300 PG	Cover	1432823	E90
KRL-KST-300 R=300 XPG	Cover	1433354	E90
KRL-KST-300 R=600 PG	Cover	1432828	E90
KRL-KST-300 R=600 XPG	Cover	1433364	E90
KRL-KST-400 R=1000 PG	Cover	1432834	E90
KRL-KST-400 R=1000 XPG	Cover	1433375	E90
KRL-KST-400 R=300 PG	Cover	1432824	E90

PRODUCT NAME		CODE	
KRL-KST-400 R=300 XPG	Cover	1433355	E90
KRL-KST-400 R=600 PG	Cover	1432829	E90
KRL-KST-400 R=600 XPG	Cover	1433365	E90
KRL-KST-500 R=1000 PG	Cover	1432835	E90
KRL-KST-500 R=1000 XPG	Cover	1433376	E90
KRL-KST-500 R=300 PG	Cover	1432825	E90
KRL-KST-500 R=300 XPG	Cover	1433356	E90
KRL-KST-500 R=600 PG	Cover	1432830	E90
KRL-KST-500 R=600 XPG	Cover	1433366	E90
KRL-KST-600 R=1000 PG	Cover	1432836	E90
KRL-KST-600 R=1000 XPG	Cover	1433377	E90
KRL-KST-600 R=300 PG	Cover	1432826	E90
KRL-KST-600 R=300 XPG	Cover	1433357	E90
KRL-KST-600 R=600 PG	Cover	1432831	E90
KRL-KST-600 R=600 XPG	Cover	1433367	E90
KRL-KSX-150 R=300 PG	Cover	1432912	E90
KRL-KSX-150 R=300 XPG	Cover	1433378	E90
KRL-KSX-200 R=300 PG	Cover	1432837	E90
KRL-KSX-200 R=300 XPG	Cover	1433379	E90
KRL-KSX-300 R=300 PG	Cover	1432838	E90
KRL-KSX-300 R=300 XPG	Cover	1433380	E90
KRL-KSX-400 R=300 PG	Cover	1432839	E90
KRL-KSX-400 R=300 XPG	Cover	1433381	E90
KRL-KSX-500 R=300 PG	Cover	1432840	E90
KRL-KSX-500 R=300 XPG	Cover	1433382	E90
KRL-KSX-600 R=300 PG	Cover	1432841	E90
KRL-KSX-600 R=300 XPG	Cover	1433383	E90
KRL-RS90-100 M	Cover	1431721	E90
KRL-RS90-100 PG	Cover	1431881	E90
KRL-RS90-200 M	Cover	1431722	E90
KRL-RS90-200 PG	Cover	1431882	E90
KRL-RS90-300 M	Cover	1431723	E90
KRL-RS90-300 PG	Cover	1431883	E90
KRL-RS90-400 M	Cover	1431724	E90
KRL-RS90-400 PG	Cover	1431884	E90
KRL-RS90-500 M	Cover	1431725	E90
KRL-RS90-500 PG	Cover	1431885	E90
KRL-RT-100 M	Cover	1431811	E90
KRL-RT-100 PG	Cover	1431891	E90
KRL-RT-200 M	Cover	1431812	E90
KRL-RT-200 PG	Cover	1431892	E90
KRL-RT-300 M	Cover	1431813	E90
KRL-RT-300 PG	Cover	1431893	E90
KRL-RT-400 M	Cover	1431814	E90
KRL-RT-400 PG	Cover	1431894	E90
KRL-RT-500 M	Cover	1431815	E90
KRL-RT-500 PG	Cover	1431895	E90
KS100 J PG	Joint	1478125	E90
KS100 J XPG	Joint	1478162	E90
KS100-200 L=6000 HDG	Cable ladder	1478179	E90
KS100-200 L=6000 PG	Cable ladder	1478105	E90
KS100-200 L=6000 XPG	Cable ladder	1478142	E90
KS100-300 L=6000 HDG	Cable ladder	1478180	E90
KS100-300 L=6000 PG	Cable ladder	1478106	E90

PRODUCT NAME		CODE	
KS100-300 L=6000 XPG	Cable ladder	1478143	E90
KS100-400 L=6000 HDG	Cable ladder	1478181	E90
KS100-400 L=6000 PG	Cable ladder	1478107	E90
KS100-400 L=6000 XPG	Cable ladder	1478144	E90
KS100-500 L=6000 HDG	Cable ladder	1478182	E90
KS100-500 L=6000 PG	Cable ladder	1478108	E90
KS100-500 L=6000 XPG	Cable ladder	1478145	E90
KS100-600 L=6000 HDG	Cable ladder	1478183	E90
KS100-600 L=6000 PG	Cable ladder	1478109	E90
KS100-600 L=6000 XPG	Cable ladder	1478146	E90
KS20-200 K L=3000 PG	Cable ladder	1431802	E90
KS20-200 K L=6000 PG	Cable ladder	1431907	E90
KS20-200 L=3000 HDG	Cable ladder	1433112	E90
KS20-200 L=3000 PG	Cable ladder	1449401	E90
KS20-200 L=3000 XPG	Cable ladder	1433072	E90
KS20-200 L=6000 HDG	Cable ladder	1433102	E90
KS20-200 L=6000 PG	Cable ladder	1449502	E90
KS20-200 L=6000 XPG	Cable ladder	1433077	E90
KS20-300 K L=3000 PG	Cable ladder	1431803	E90
KS20-300 K L=6000 PG	Cable ladder	1431908	E90
KS20-300 L=3000 HDG	Cable ladder	1433113	E90
KS20-300 L=3000 PG	Cable ladder	1449402	E90
KS20-300 L=3000 XPG	Cable ladder	1433073	E90
KS20-300 L=6000 HDG	Cable ladder	1433103	E90
KS20-300 L=6000 PG	Cable ladder	1449503	E90
KS20-300 L=6000 XPG	Cable ladder	1433078	E90
KS20-400 K L=3000 PG	Cable ladder	1431804	E90
KS20-400 K L=6000 PG	Cable ladder	1431909	E90
KS20-400 L=3000 HDG	Cable ladder	1433114	E90
KS20-400 L=3000 PG	Cable ladder	1449403	E90
KS20-400 L=3000 XPG	Cable ladder	1433074	E90
KS20-400 L=6000 HDG	Cable ladder	1433104	E90
KS20-400 L=6000 PG	Cable ladder	1449504	E90
KS20-400 L=6000 XPG	Cable ladder	1433079	E90
KS20-500 K L=3000 PG	Cable ladder	1431805	E90
KS20-500 K L=6000 PG	Cable ladder	1431911	E90
KS20-500 L=3000 HDG	Cable ladder	1433115	E90
KS20-500 L=3000 PG	Cable ladder	1449404	E90
KS20-500 L=3000 XPG	Cable ladder	1433075	E90
KS20-500 L=6000 HDG	Cable ladder	1433105	E90
KS20-500 L=6000 PG	Cable ladder	1449505	E90
KS20-500 L=6000 XPG	Cable ladder	1433080	E90
KS20-600 K L=3000 PG	Cable ladder	1431806	E90
KS20-600 K L=6000 PG	Cable ladder	1431912	E90
KS20-600 L=3000 HDG	Cable ladder	1433116	E90
KS20-600 L=3000 PG	Cable ladder	1449405	E90
KS20-600 L=3000 XPG	Cable ladder	1433076	E90
KS20-600 L=6000 HDG	Cable ladder	1433106	E90
KS20-600 L=6000 PG	Cable ladder	1449506	E90
KS20-600 L=6000 XPG	Cable ladder	1433081	E90
KS45-150 R=300 HDG	Bend 45°	1449211	E90
KS45-200 R=300 HDG	Bend 45°	1449212	E90
KS45-300 R=300 HDG	Bend 45°	1449213	E90
KS45-400 R=300 HDG	Bend 45°	1449214	E90

PRODUCT NAME		CODE	
KS45-500 R=300 HDG	Bend 45°	1449215	E90
KS45-600 R=300 HDG	Bend 45°	1449216	E90
KS60-200 L=3000 PG	Cable ladder	1433017	E90
KS60-200 L=6000 HDG	Cable ladder	1433092	E90
KS60-200 L=6000 PG	Cable ladder	1433027	E90
KS60-200 L=6000 XPG	Cable ladder	1433087	E90
KS60-300 L=3000 PG	Cable ladder	1433018	E90
KS60-300 L=6000 HDG	Cable ladder	1433093	E90
KS60-300 L=6000 PG	Cable ladder	1433028	E90
KS60-300 L=6000 XPG	Cable ladder	1433088	E90
KS60-400 L=3000 PG	Cable ladder	1433019	E90
KS60-400 L=6000 HDG	Cable ladder	1433094	E90
KS60-400 L=6000 PG	Cable ladder	1433029	E90
KS60-400 L=6000 XPG	Cable ladder	1433089	E90
KS60-500 L=3000 PG	Cable ladder	1433020	E90
KS60-500 L=6000 HDG	Cable ladder	1433095	E90
KS60-500 L=6000 PG	Cable ladder	1433030	E90
KS60-500 L=6000 XPG	Cable ladder	1433090	E90
KS60-600 L=3000 PG	Cable ladder	1433021	E90
KS60-600 L=6000 HDG	Cable ladder	1433096	E90
KS60-600 L=6000 PG	Cable ladder	1433031	E90
KS60-600 L=6000 XPG	Cable ladder	1433091	E90
KS80-150 L=3000 HDG	Cable ladder	1449406	E90
KS80-150 L=6000 HDG	Cable ladder	1449521	E90
KS80-200 L=3000 HDG	Cable ladder	1449407	E90
KS80-200 L=6000 HDG	Cable ladder	1449522	E90
KS80-200 SP2.0 L=6000 HDG	Cable ladder	1449507	E90
KS80-300 L=3000 HDG	Cable ladder	1449408	E90
KS80-300 L=6000 HDG	Cable ladder	1449523	E90
KS80-300 SP2.0 L=6000 HDG	Cable ladder	1449508	E90
KS80-400 L=3000 HDG	Cable ladder	1449409	E90
KS80-400 L=6000 HDG	Cable ladder	1449524	E90
KS80-400 SP2.0 L=6000 HDG	Cable ladder	1449509	E90
KS80-500 L=3000 HDG	Cable ladder	1449410	E90
KS80-500 L=6000 HDG	Cable ladder	1449525	E90
KS80-500 SP2.0 L=6000 HDG	Cable ladder	1449510	E90
KS80-600 L=3000 HDG	Cable ladder	1449411	E90
KS80-600 L=6000 HDG	Cable ladder	1449526	E90
KS80-600 SP2.0 L=6000 HDG	Cable ladder	1449511	E90
KS90-150 R=1000 HDG	Bend 90°	1449553	E90
KS90-150 R=300 HDG	Bend 90°	1449547	E90
KS90-150 R=600 HDG	Bend 90°	1449541	E90
KS90-200 R=100 HDG	Bend 90°	1449560	E90
KS90-200 R=1000 HDG	Bend 90°	1449554	E90
KS90-200 R=300 HDG	Bend 90°	1449548	E90
KS90-200 R=600 HDG	Bend 90°	1449542	E90
KS90-300 R=100 HDG	Bend 90°	1449561	E90
KS90-300 R=1000 HDG	Bend 90°	1449555	E90
KS90-300 R=300 HDG	Bend 90°	1449549	E90
KS90-300 R=600 HDG	Bend 90°	1449543	E90
KS90-400 R=100 HDG	Bend 90°	1449562	E90
KS90-400 R=1000 HDG	Bend 90°	1449556	E90
KS90-400 R=300 HDG	Bend 90°	1449550	E90
KS90-400 R=600 HDG	Bend 90°	1449544	E90

PRODUCT NAME		CODE	🔥
KS90-500 R=100 HDG	Bend 90°	1449563	E90
KS90-500 R=1000 HDG	Bend 90°	1449557	E90
KS90-500 R=300 HDG	Bend 90°	1449551	E90
KS90-500 R=600 HDG	Bend 90°	1449545	E90
KS90-600 R=100 HDG	Bend 90°	1449564	E90
KS90-600 R=1000 HDG	Bend 90°	1449558	E90
KS90-600 R=300 HDG	Bend 90°	1449552	E90
KS90-600 R=600 HDG	Bend 90°	1449546	E90
KSF-VT HDG	Side profile support	1449682	E90
KSF80-200 L=6000 HDG	Cable ladder	1449532	E90
KSF80-300 L=6000 HDG	Cable ladder	1449533	E90
KSF80-400 L=6000 HDG	Cable ladder	1449534	E90
KSF80-500 L=6000 HDG	Cable ladder	1449535	E90
KSF80-600 L=6000 HDG	Cable ladder	1449536	E90
KSF90-200 R=300 HDG	Bend 90°	1449441	E90
KSF90-300 R=300 HDG	Bend 90°	1449442	E90
KSF90-400 R=300 HDG	Bend 90°	1449443	E90
KSF90-500 R=300 HDG	Bend 90°	1449444	E90
KSF90-600 R=300 HDG	Bend 90°	1449445	E90
KST-150 R=1000 HDG	T-piece	1449421	E90
KST-150 R=300 HDG	T-piece	1449568	E90
KST-150 R=600 HDG	T-piece	1449582	E90
KST-200 R=1000 HDG	T-piece	1449422	E90
KST-200 R=300 HDG	T-piece	1449569	E90
KST-200 R=600 HDG	T-piece	1449583	E90
KST-300 R=1000 HDG	T-piece	1449423	E90
KST-300 R=300 HDG	T-piece	1449570	E90
KST-300 R=600 HDG	T-piece	1449584	E90
KST-400 R=1000 HDG	T-piece	1449424	E90
KST-400 R=300 HDG	T-piece	1449571	E90
KST-400 R=600 HDG	T-piece	1449585	E90
KST-500 R=1000 HDG	T-piece	1449425	E90
KST-500 R=300 HDG	T-piece	1449572	E90
KST-500 R=600 HDG	T-piece	1449586	E90
KST-600 R=1000 HDG	T-piece	1449426	E90
KST-600 R=300 HDG	T-piece	1449573	E90
KST-600 R=600 HDG	T-piece	1449587	E90
KSX-150 R=300 HDG	X-piece	1449576	E90
KSX-200 R=300 HDG	X-piece	1449577	E90
KSX-300 R=300 HDG	X-piece	1449578	E90
KSX-400 R=300 HDG	X-piece	1449579	E90
KSX-500 R=300 HDG	X-piece	1449580	E90
KSX-600 R=300 HDG	X-piece	1449581	E90
MEK 110 K L=3000 M	Lighting support rail	1449320	E60
MEK 110 K L=3000 PG	Lighting support rail	1449328	E60
MEK 110 K L=6000 M	Lighting support rail	1449370	E60
MEK 110 K L=6000 PG	Lighting support rail	1449368	E60
MEK 110 L=3000 M	Lighting support rail	1449309	E60
MEK 110 L=3000 PG	Lighting support rail	1449307	E60
MEK 110 L=6000 M	Lighting support rail	1449317	E60
MEK 110 L=6000 PG	Lighting support rail	1449313	E60
MEK 70 K L=3000 B	Lighting support rail	1449268	E60
MEK 70 K L=3000 M	Lighting support rail	1449308	E60
MEK 70 K L=3000 PG	Lighting support rail	1449305	E60

PRODUCT NAME		CODE	🔥
MEK 70 K L=3000 XPG	Lighting support rail	1449293	E60
MEK 70 K L=6000 B	Lighting support rail	1449269	E60
MEK 70 K L=6000 M	Lighting support rail	1449315	E60
MEK 70 K L=6000 PG	Lighting support rail	1449311	E60
MEK 70 K L=6000 XPG	Lighting support rail	1449296	E60
MEK 70 L=3000 HDG	Lighting support rail	1429149	E60
MEK 70 L=3000 PG	Lighting support rail	1449306	E60
MEK 70 L=6000 PG	Lighting support rail	1449312	E60
MEK 70 S L=3000 M	Lighting support rail	1449303	E60
MEK 70 S L=3000 PG	Lighting support rail	1449304	E60
MEK 70 S L=6000 M	Lighting support rail	1449310	E60
MEK 70 S L=6000 PG	Lighting support rail	1449314	E60
MEK J-110 PG	Joint	1449352	E60
MEK J-70 HDG	Joint	1429150	E60
MEK J-70 PG	Joint	1449351	E60
MEK J-70 XPG	Joint	1449288	E60
MEK KR-70	Corner piece	1449329	E60
MEK KR-70 M	Corner piece	1449330	E60
MEK RK-110 M	Intermediate support	1449390	E60
MEK RK-110 PG	Intermediate support	1449357	E60
MEK RK-70 HDG	Intermediate support	1429153	E60
MEK RK-70 M	Intermediate support	1449389	E60
MEK RK-70 PG	Intermediate support	1449356	E60
MEK RK-70 XPG	Intermediate support	1449358	E60
MEK SK-70 M	Wall support	1449379	E60
MEK SK-70 PG	Wall support	1449361	E60
MK-210 HDG	Intermediate support	1433122	E60
MK-210 PG	Intermediate support	1449242	E60
MK-216 PG	Intermediate support	1449252	E60
MK-310 HDG	Intermediate support	1433123	E60
MK-310 PG	Intermediate support	1449243	E60
MK-316 PG	Intermediate support	1449253	E60
MK-410 HDG	Intermediate support	1433124	E60
MK-410 PG	Intermediate support	1449244	E60
MK-416 PG	Intermediate support	1449254	E60
MK-510 HDG	Intermediate support	1433125	E60
MK-510 PG	Intermediate support	1449245	E60
MK-516 PG	Intermediate support	1449255	E60
MK-610 HDG	Intermediate support	1433126	E60
MK-610 PG	Intermediate support	1449246	E60
MK-616 PG	Intermediate support	1449256	E60
MU M10 EG	Nut	1449992	E90
MU M10 HDG	Nut	1449166	E90
MU M10 M	Nut	1431740	E90
MU M16 EG	Nut	1449993	E90
MU M16 HDG	Nut	1449167	E90
MU M6 EG	Nut for threaded rod M6	1459427	E90
P-40-100 KRA M	End plate	1431781	E90
P-40-100 KRA PG	End plate	1431771	E90
P-40-200 KRA M	End plate	1431782	E90
P-40-200 KRA PG	End plate	1431772	E90
P-40-300 KRA M	End plate	1431783	E90
P-40-300 KRA PG	End plate	1431773	E90
P-40-400 KRA M	End plate	1431784	E90



PRODUCT NAME		CODE	🔥
P-40-400 KRA PG	End plate	1431774	E90
P-40-500 KRA M	End plate	1431785	E90
P-40-500 KRA PG	End plate	1431775	E90
P-60-100 KRA M	End plate	1432681	E90
P-60-100 KRA PG	End plate	1432671	E90
P-60-200 KRA M	End plate	1432682	E90
P-60-200 KRA PG	End plate	1432672	E90
P-60-300 KRA M	End plate	1432683	E90
P-60-300 KRA PG	End plate	1432673	E90
P-60-400 KRA M	End plate	1432684	E90
P-60-400 KRA PG	End plate	1432674	E90
P-60-500 KRA M	End plate	1432685	E90
P-60-500 KRA PG	End plate	1432675	E90
POL-150 L=3000 PG	Bottom plate	1449417	E90
POL-200 L=3000 PG	Bottom plate	1449412	E90
POL-200 L=3000 XPG	Bottom plate	1433431	E90
POL-300 L=3000 PG	Bottom plate	1449413	E90
POL-300 L=3000 XPG	Bottom plate	1433432	E90
POL-400 L=3000 PG	Bottom plate	1449414	E90
POL-400 L=3000 XPG	Bottom plate	1433433	E90
POL-500 L=3000 PG	Bottom plate	1449415	E90
POL-500 L=3000 XPG	Bottom plate	1433434	E90
POL-600 L=3000 PG	Bottom plate	1449416	E90
POL-600 L=3000 XPG	Bottom plate	1433435	E90
PPU-150 L=3000 M	Bottom cover	1432919	E90
PPU-150 L=3000 PG	Bottom cover	1432918	E90
PPU-150 L=3000 XPG	Bottom cover	1433482	E90
PPU-200 L=3000 M	Bottom cover	1432892	E90
PPU-200 L=3000 PG	Bottom cover	1432887	E90
PPU-200 L=3000 XPG	Bottom cover	1433483	E90
PPU-300 L=3000 M	Bottom cover	1432893	E90
PPU-300 L=3000 PG	Bottom cover	1432888	E90
PPU-300 L=3000 XPG	Bottom cover	1433484	E90
PPU-400 L=3000 M	Bottom cover	1432894	E90
PPU-400 L=3000 PG	Bottom cover	1432889	E90
PPU-400 L=3000 XPG	Bottom cover	1433485	E90
PPU-500 L=3000 M	Bottom cover	1432895	E90
PPU-500 L=3000 PG	Bottom cover	1432890	E90
PPU-500 L=3000 XPG	Bottom cover	1433486	E90
PPU-600 L=3000 M	Bottom cover	1432896	E90
PPU-600 L=3000 PG	Bottom cover	1432891	E90
PPU-600 L=3000 XPG	Bottom cover	1433487	E90
PRT-200 PG	Gate support	1449970	E90
PRT-200 XPG	Gate support	1433448	E90
PRT-300 PG	Gate support	1449971	E90
PRT-300 XPG	Gate support	1433449	E90
PRT-400 PG	Gate support	1449972	E90
PRT-400 XPG	Gate support	1433450	E90
PRT-500 PG	Gate support	1449973	E90
PRT-500 XPG	Gate support	1433451	E90
PRT-600 PG	Gate support	1449974	E90
PRT-600 XPG	Gate support	1433452	E90
PSK-150 L=3000 PG	Cover	1449100	E90
PSK-150 L=3000 XPG	Cover	1433411	E90

PRODUCT NAME		CODE	🔥
PSK-200 L=3000 PG	Cover	1449101	E90
PSK-200 L=3000 XPG	Cover	1433412	E90
PSK-300 L=3000 PG	Cover	1449102	E90
PSK-300 L=3000 XPG	Cover	1433413	E90
PSK-400 L=3000 PG	Cover	1449103	E90
PSK-400 L=3000 XPG	Cover	1433414	E90
PSK-500 L=3000 PG	Cover	1449104	E90
PSK-500 L=3000 XPG	Cover	1433415	E90
PSK-600 L=3000 PG	Cover	1449105	E90
PSK-600 L=3000 XPG	Cover	1433416	E90
RMK-40-100 10 M	Intermediate support	1431501	E90
RMK-40-100 10 PG	Intermediate support	1431491	E90
RMK-40-200 10 M	Intermediate support	1431502	E90
RMK-40-200 10 PG	Intermediate support	1431492	E90
RMK-40-300 10 M	Intermediate support	1431503	E90
RMK-40-300 10 PG	Intermediate support	1431493	E90
RMK-40-400 10 M	Intermediate support	1431504	E90
RMK-40-400 10 PG	Intermediate support	1431494	E90
RMK-40-500 10 M	Intermediate support	1431505	E90
RMK-40-500 10 PG	Intermediate support	1431495	E90
RMK-60-100 10 M	Intermediate support	1432621	E90
RMK-60-100 10 PG	Intermediate support	1432611	E90
RMK-60-200 10 M	Intermediate support	1432622	E90
RMK-60-200 10 PG	Intermediate support	1432612	E90
RMK-60-300 10 M	Intermediate support	1432623	E90
RMK-60-300 10 PG	Intermediate support	1432613	E90
RMK-60-400 10 M	Intermediate support	1432624	E90
RMK-60-400 10 PG	Intermediate support	1432614	E90
RMK-60-500 10 M	Intermediate support	1432625	E90
RMK-60-500 10 PG	Intermediate support	1432615	E90
RS 1 HDG	Bolt set	1449697	E90
RS 2 HDG	Bolt set	1449698	E90
RS 3 HDG	Bolt set	1449699	E90
RS 4 EG	Bolt set	1448720	E60
RS 4 HDG	Bolt set	1448721	E60
RS 4 HST	Bolt set	1448722	E60
RS 5 EG	Bolt set	1470352	E90
RS 5 HDG	Bolt set	1470353	E90
RS KSF HDG	Bolt set	1449115	E90
RS MEK J 10 EG	Bolt set	1449108	E60
RS MEK J 10 HDG	Bolt set	1449107	E60
RS SSU HDG	Bolt set	1449111	E90
RS VK2 HDG	Bolt set	1449112	E90
RS90-40-100 M	Corner piece	1431321	E90
RS90-40-100 PG	Corner piece	1431311	E90
RS90-40-200 M	Corner piece	1431322	E90
RS90-40-200 PG	Corner piece	1431312	E90
RS90-40-300 M	Corner piece	1431323	E90
RS90-40-300 PG	Corner piece	1431313	E90
RS90-40-400 M	Corner piece	1431324	E90
RS90-40-400 PG	Corner piece	1431314	E90
RS90-40-500 M	Corner piece	1431325	E90
RS90-40-500 PG	Corner piece	1431315	E90
RS90-60-100 M	Corner piece	1432171	E90

PRODUCT NAME		CODE	🔥
RS90-60-100 PG	Corner piece	1432161	E90
RS90-60-200 M	Corner piece	1432172	E90
RS90-60-200 PG	Corner piece	1432162	E90
RS90-60-300 M	Corner piece	1432173	E90
RS90-60-300 PG	Corner piece	1432163	E90
RS90-60-400 M	Corner piece	1432174	E90
RS90-60-400 PG	Corner piece	1432164	E90
RS90-60-500 M	Corner piece	1432175	E90
RS90-60-500 PG	Corner piece	1432165	E90
RSS-40-100 M	Joint	1431421	E90
RSS-40-100 PG	Joint	1431411	E90
RSS-40-200 M	Joint	1431422	E90
RSS-40-200 PG	Joint	1431412	E90
RSS-40-300 M	Joint	1431423	E90
RSS-40-300 PG	Joint	1431413	E90
RSS-40-400 M	Joint	1431424	E90
RSS-40-400 PG	Joint	1431414	E90
RSS-40-500 M	Joint	1431425	E90
RSS-40-500 PG	Joint	1431415	E90
RSS-60-100 M	Joint	1432471	E90
RSS-60-100 PG	Joint	1432461	E90
RSS-60-200 M	Joint	1432472	E90
RSS-60-200 PG	Joint	1432462	E90
RSS-60-300 M	Joint	1432473	E90
RSS-60-300 PG	Joint	1432463	E90
RSS-60-400 M	Joint	1432474	E90
RSS-60-400 PG	Joint	1432464	E90
RSS-60-500 M	Joint	1432475	E90
RSS-60-500 PG	Joint	1432465	E90
RT-40-100 M	T-piece	1431361	E90
RT-40-100 PG	T-piece	1431351	E90
RT-40-200 M	T-piece	1431362	E90
RT-40-200 PG	T-piece	1431352	E90
RT-40-300 M	T-piece	1431363	E90
RT-40-300 PG	T-piece	1431353	E90
RT-40-400 M	T-piece	1431364	E90
RT-40-400 PG	T-piece	1431354	E90
RT-40-500 M	T-piece	1431365	E90
RT-40-500 PG	T-piece	1431355	E90
RT-60-100 M	T-piece	1432291	E90
RT-60-100 PG	T-piece	1432281	E90
RT-60-200 M	T-piece	1432292	E90
RT-60-200 PG	T-piece	1432282	E90
RT-60-300 M	T-piece	1432293	E90
RT-60-300 PG	T-piece	1432283	E90
RT-60-400 M	T-piece	1432294	E90
RT-60-400 PG	T-piece	1432284	E90
RT-60-500 M	T-piece	1432295	E90
RT-60-500 PG	T-piece	1432285	E90
RTF-10 HDG	Ceiling bracket	1449652	E90
RTF-10 PG	Ceiling bracket	1449484	E90
RTF-16 HDG	Ceiling bracket	1449653	E90
RTF-S HDG	Ceiling bracket	1449654	E90
RTF-S PG	Ceiling bracket	1449478	E90

PRODUCT NAME		CODE	🔥
RTF-Z HDG	Ceiling bracket	1449656	E90
SK-150 L=1550 PG	Cover	1449711	E90
SK-150 L=1550 XPG	Cover	1433421	E90
SK-200 L=1550 PG	Cover	1449712	E90
SK-200 L=1550 XPG	Cover	1433422	E90
SK-300 L=1550 PG	Cover	1449713	E90
SK-300 L=1550 XPG	Cover	1433423	E90
SK-400 L=1550 PG	Cover	1449714	E90
SK-400 L=1550 XPG	Cover	1433424	E90
SK-500 L=1550 PG	Cover	1449715	E90
SK-500 L=1550 XPG	Cover	1433425	E90
SK-600 L=1550 PG	Cover	1449716	E90
SK-600 L=1550 XPG	Cover	1433426	E90
SMT HDG	Sliding nut	1449684	E90
SR-100 L=2000 PG	Low voltage gutter	1449702	E90
SR-100 L=2000 XPG	Low voltage gutter	1433464	E90
SR-150 L=2000 PG	Low voltage gutter	1449703	E90
SR-150 L=2000 XPG	Low voltage gutter	1433465	E90
SR-50 L=2000 PG	Low voltage gutter	1449701	E90
SR-50 L=2000 XPG	Low voltage gutter	1433463	E90
SSR HDG	Joint	1449669	E90
SSR PG	Joint	1449482	E90
SSU HDG	Joint	1449670	E90
TP1-1000 HDG	Ceiling support	1449604	E90
TP1-1500 HDG	Ceiling support	1449606	E90
TP1-2000 HDG	Ceiling support	1449608	E90
TP1-250 HDG	Ceiling support	1449601	E90
TP1-500 HDG	Ceiling support	1449602	E90
TP1-750 HDG	Ceiling support	1449603	E90
TP2-1000 HDG	Ceiling support	1449613	E90
TP2-1500 HDG	Ceiling support	1449615	E90
TP2-2000 HDG	Ceiling support	1449617	E90
TP2-3000 HDG	Ceiling support	1449618	E90
TP2-500 HDG	Ceiling support	1449610	E90
TP2-L-1000 HDG	Ceiling support	1449131	E90
TP2-L-1500 HDG	Ceiling support	1449132	E90
TP2-L-2000 HDG	Ceiling support	1449133	E90
TP2-L-3000 HDG	Ceiling support	1449134	E90
TP2-L-500 HDG	Ceiling support	1449130	E90
TP2-P-1000 HDG	Ceiling support	1449141	E90
TP2-P-1500 HDG	Ceiling support	1449142	E90
TP2-P-2000 HDG	Ceiling support	1449143	E90
TP2-P-3000 HDG	Ceiling support	1449144	E90
TP2-P-500 HDG	Ceiling support	1449140	E90
TPK-200 HDG	Gate support	1449492	E90
TPK-300 HDG	Gate support	1449493	E90
TPK-400 HDG	Gate support	1449494	E90
TPK-500 HDG	Gate support	1449495	E90
TPK-600 HDG	Gate support	1449496	E90
VF HDG	T-branch bracket	1449666	E90
VF PG	T-branch bracket	1449890	E90
VF XPG	T-branch bracket	1433058	E90
VK-150 2KN HDG	Wall support	1449590	E90
VK-200 2KN HDG	Wall support	1449591	E90

PRODUCT NAME		CODE	🔥
VK-300 2KN HDG	Wall support	1449592	E90
VK-400 2KN HDG	Wall support	1449593	E90
VK-500 2KN HDG	Wall support	1449594	E90
VK-600 2KN HDG	Wall support	1449595	E90
VK2 HDG	Wall bracket	1449671	E90
VK2 PG	Wall bracket	1449479	E90
VK2 XPG	Wall bracket	1433059	E90
VK3 HDG	Wall bracket	1449668	E90
VK3 XPG	Wall bracket	1433060	E90
VKF-200 4KN HDG	Wall support	1449622	E90
VKF-300 4KN HDG	Wall support	1449623	E90
VKF-400 4KN HDG	Wall support	1449624	E90
VKF-500 4KN HDG	Wall support	1449625	E90
VKF-600 4KN HDG	Wall support	1449626	E90
VKF-700 4KN HDG	Wall support	1449627	E90
VKZ-100 HDG	Wall support	1429109	E90
VKZ-100 HST	Wall support	1429113	E90
VKZ-100 PG	Wall support	1429105	E90
VKZ-200 HDG	Wall support	1429110	E90
VKZ-200 HST	Wall support	1429114	E90
VKZ-200 PG	Wall support	1429106	E90
VKZ-300 HDG	Wall support	1429111	E90
VKZ-300 HST	Wall support	1429115	E90
VKZ-300 PG	Wall support	1429107	E90
VKZ-400 HDG	Wall support	1429112	E90
VKZ-400 HST	Wall support	1429116	E90
VKZ-400 PG	Wall support	1429108	E90
VKZ-N-100 HDG	Wall support	1429122	E90
VKZ-N-100 HST	Wall support	1429126	E90
VKZ-N-100 PG	Wall support	1429117	E90
VKZ-N-200 HDG	Wall support	1429123	E90
VKZ-N-200 HST	Wall support	1429127	E90
VKZ-N-200 PG	Wall support	1429118	E90
VKZ-N-300 HDG	Wall support	1429124	E90
VKZ-N-300 HST	Wall support	1429128	E90
VKZ-N-300 PG	Wall support	1429119	E90
VKZ-N-400 HDG	Wall support	1429125	E90
VKZ-N-400 HST	Wall support	1429129	E90
VKZ-N-400 PG	Wall support	1429121	E90
WMT CL EG	Connector set	1448710	E60
WMT CL HDG	Connector set	1448703	E60
WMT CL HST	Connector set	1448706	E60
WMT CL1 EG	Connector plate	1448712	E60
WMT CL1 HDG	Connector plate	1448709	E60
WMT CL1 HST	Connector plate	1448700	E60
WMT SC1 EG	Snap in connector	1448723	E60
WMT SC1 HDG	Snap in connector	1448724	E60
WMT SC1 HST	Snap in connector	1448725	E60
WMT SC2 EG	Snap in connector	1448726	E60
WMT SC2 HDG	Snap in connector	1448727	E60
WMT SC2 HST	Snap in connector	1448728	E60
WMT UC EG	Connection set	1448711	E60
WMT UC HDG	Connection set	1448701	E60
WMT UC HST	Connection set	1448702	E60
WMT UC1 EG	Connection plate	1448713	E60

PRODUCT NAME		CODE	🔥
WMT UC1 HDG	Connection plate	1448704	E60
WMT UC1 HST	Connection plate	1448707	E60
WMT UC1D EG	Connection plate	1448714	E60
WMT UC1D HDG	Connection plate	1448705	E60
WMT UC1D HST	Connection plate	1448708	E60
WMT-100-100 L=3000 EG	Wire mesh tray	1448415	E60
WMT-100-100 L=3000 HDG	Wire mesh tray	1448515	E60
WMT-100-100 L=3000 HST	Wire mesh tray	1448615	E60
WMT-100-100 L=3000 XPG	Wire mesh tray	1448645	E60
WMT-100-200 L=3000 EG	Wire mesh tray	1448416	E60
WMT-100-200 L=3000 HDG	Wire mesh tray	1448516	E60
WMT-100-200 L=3000 HST	Wire mesh tray	1448616	E60
WMT-100-200 L=3000 XPG	Wire mesh tray	1448646	E60
WMT-150-200 L=3000 EG	Wire mesh tray	1448423	E60
WMT-150-200 L=3000 HDG	Wire mesh tray	1448523	E60
WMT-150-200 L=3000 HST	Wire mesh tray	1448623	E60
WMT-150-200 L=3000 XPG	Wire mesh tray	1448651	E60
WMT-50-100 L=3000 EG	Wire mesh tray	1448408	E60
WMT-50-100 L=3000 HDG	Wire mesh tray	1448508	E60
WMT-50-100 L=3000 HST	Wire mesh tray	1448608	E60
WMT-50-100 L=3000 XPG	Wire mesh tray	1448639	E60
WMT-50-200 L=3000 EG	Wire mesh tray	1448409	E60
WMT-50-200 L=3000 HDG	Wire mesh tray	1448509	E60
WMT-50-200 L=3000 HST	Wire mesh tray	1448609	E60
WMT-50-200 L=3000 XPG	Wire mesh tray	1448640	E60
WMT-50-70 L=3000 EG	Wire mesh tray	1448407	E60
WMT-50-70 L=3000 HDG	Wire mesh tray	1448507	E60
WMT-50-70 L=3000 HST	Wire mesh tray	1448607	E60
WMT-50-70 L=3000 XPG	Wire mesh tray	1448638	E60
ÄF HDG	End bracket	1449679	E90





Konetie 25, FI-90620 Oulu  
+358 207 450 800  
mek@mek.eu  
www.mek.eu